



RAFFLES

DUBAI
رافلز دبي

*An Oasis in the
Heart of Dubai*

Raffles Dubai

A photograph of the Raffles Dubai hotel building. The building is a modern, multi-story structure with a prominent glass facade and a distinctive architectural design featuring large, angular concrete elements. The name "Raffles Dubai" is displayed in large, gold-colored letters on the building's facade. A palm tree is visible in the foreground on the left side of the image.

About Dubai

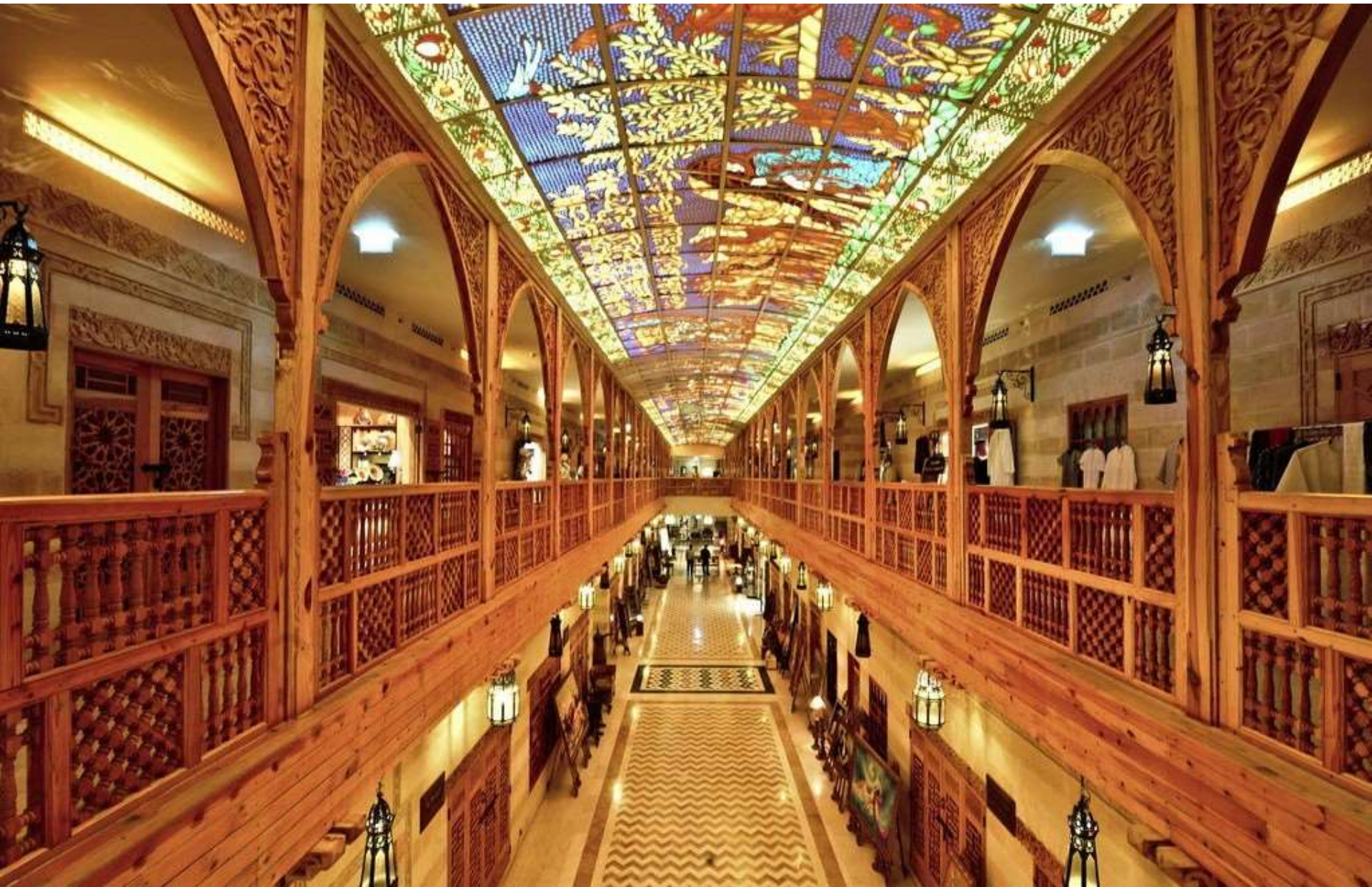


Location





Wafi Mall- Khan Murjan





Signature Room – 70 sqm



Stunning views of Dubai's skyline



Diplomatic Suite – 150 sqm

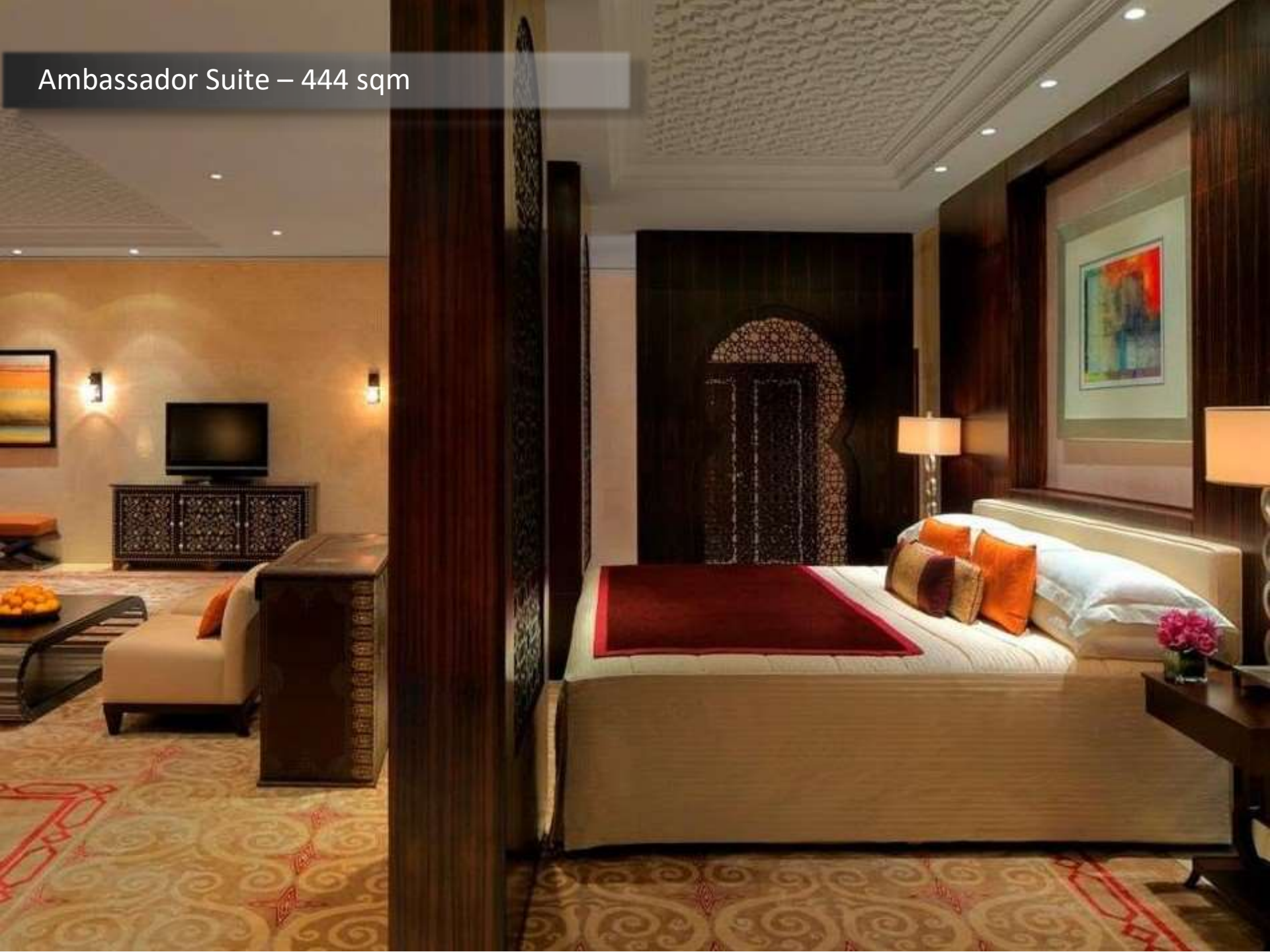


Presidential Suite (Air)– 301 sqm





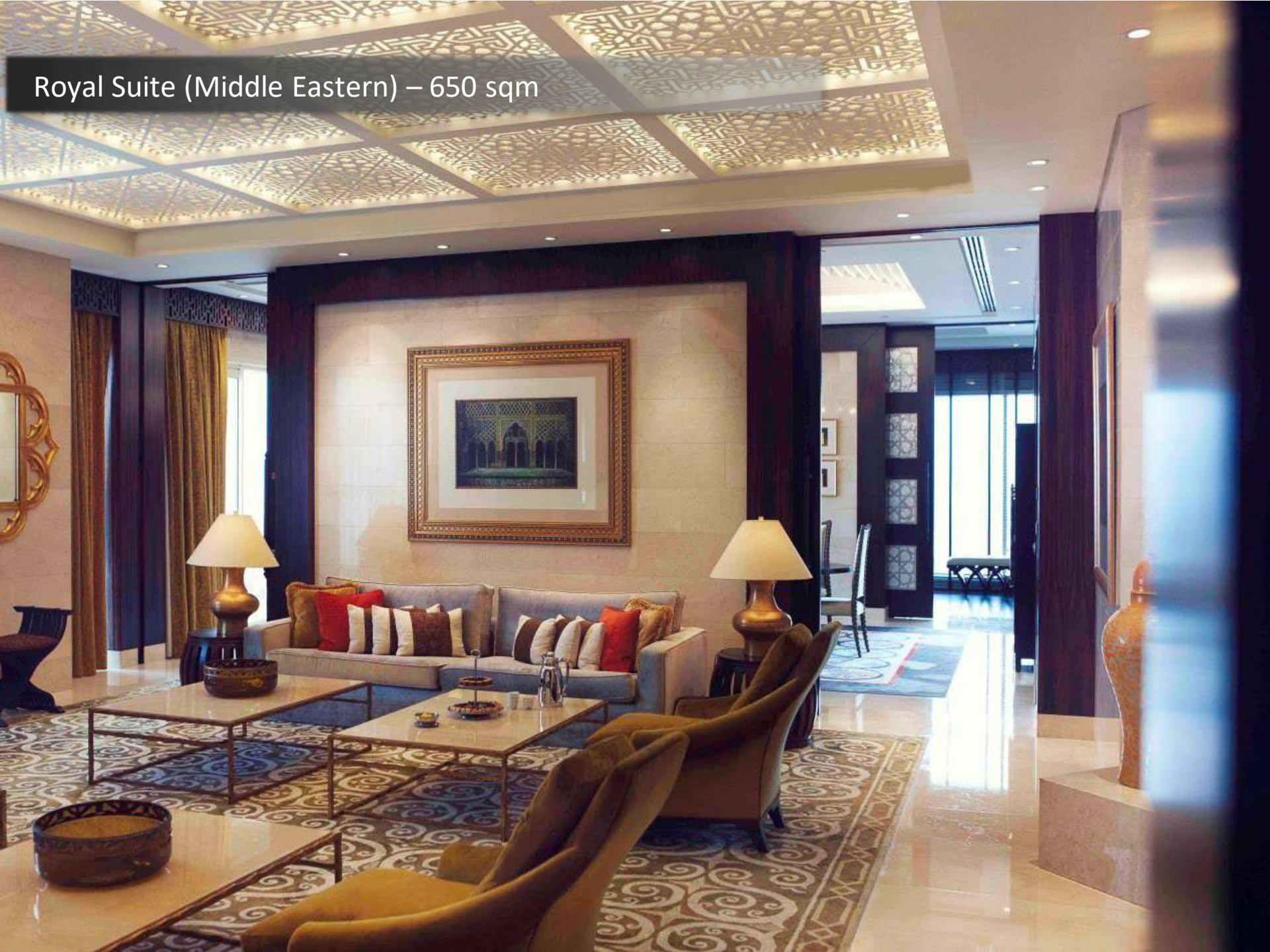
Ambassador Suite – 444 sqm



Royal Suite (Asian) – 650 sqm



Royal Suite (Middle Eastern) – 650 sqm



Raffles Club Lounge



Azur Restaurant



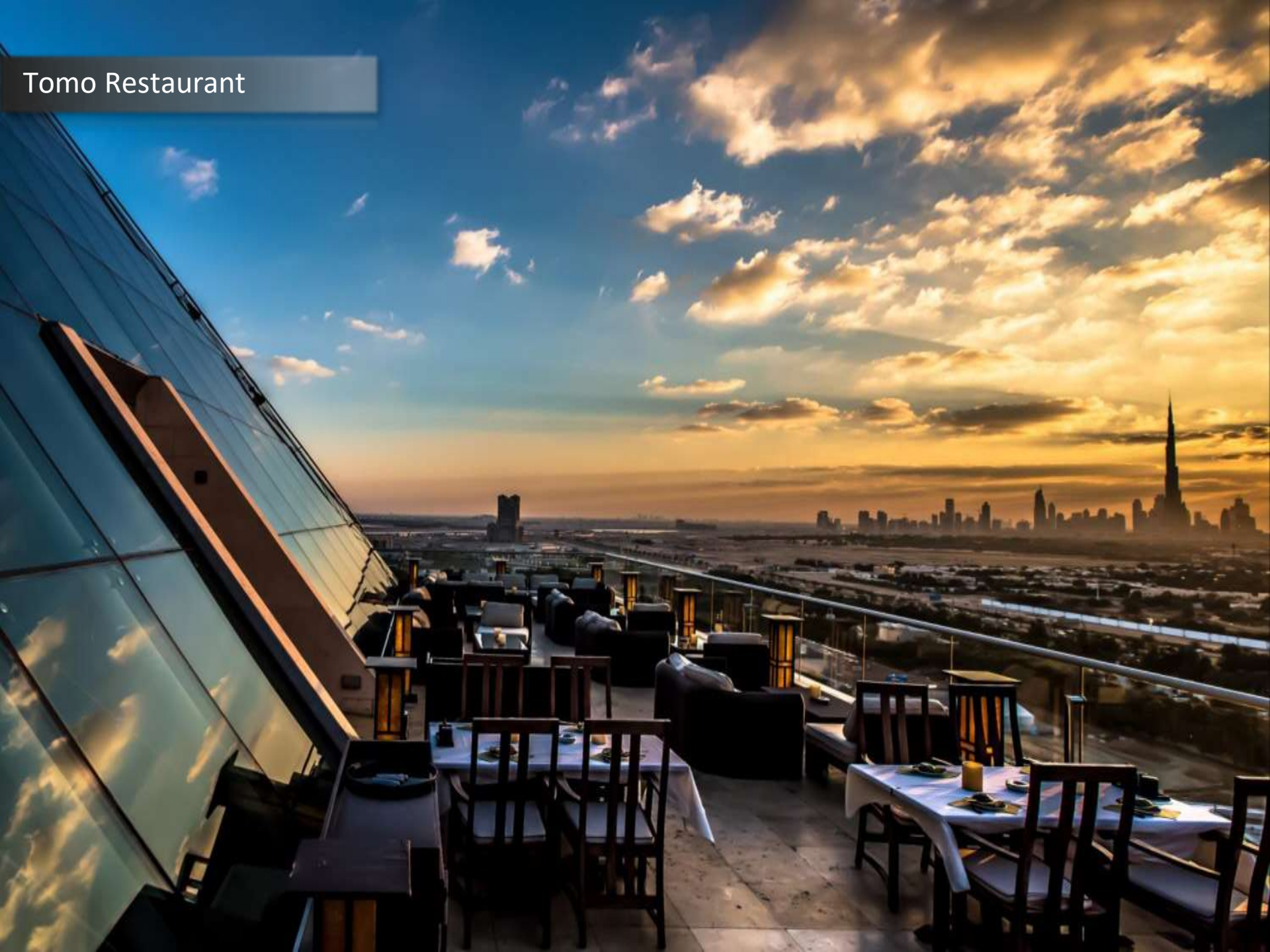
Solo Restaurant and bar



Raffles Salon

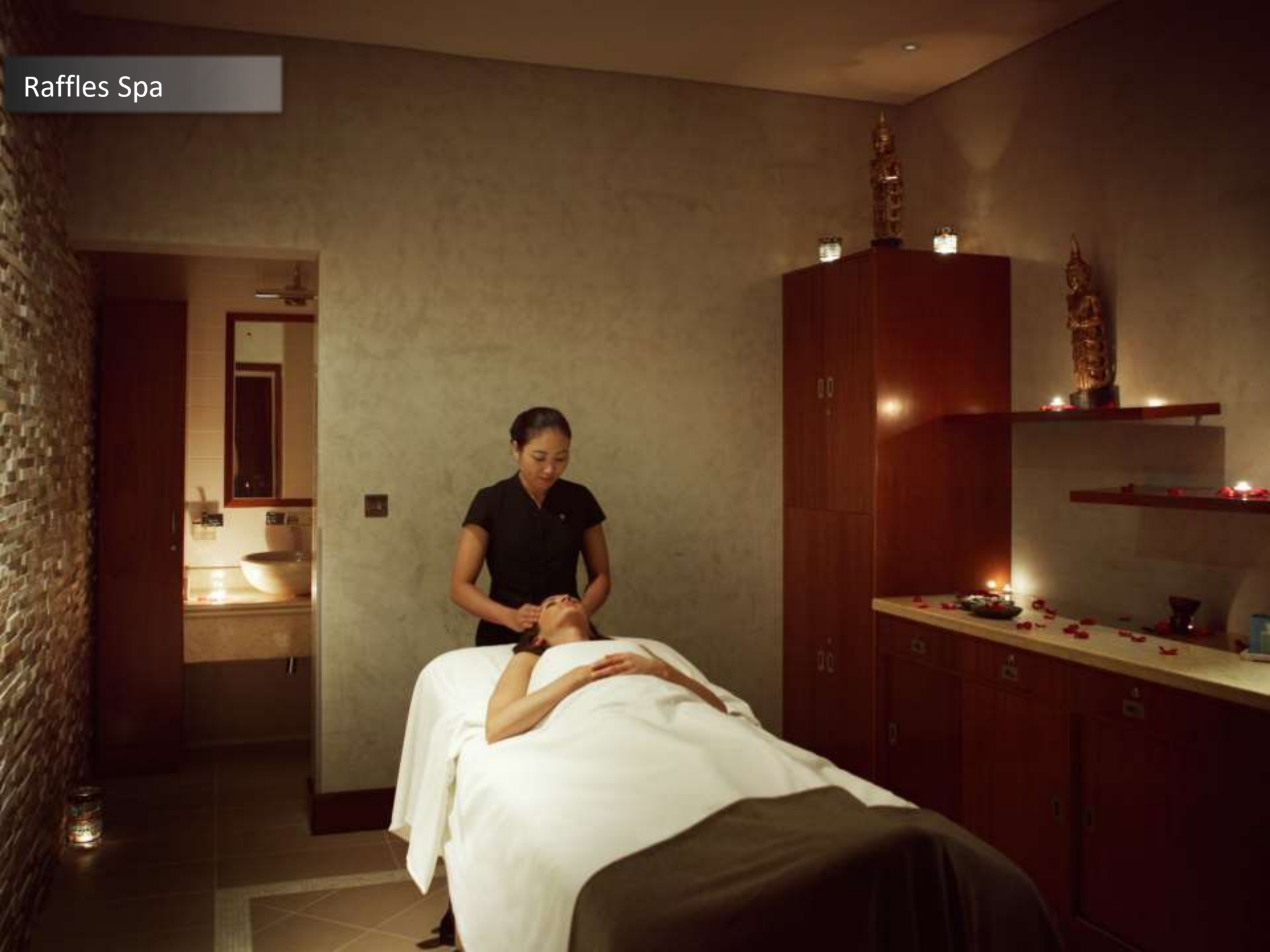


Tomo Restaurant



Raffles Garden



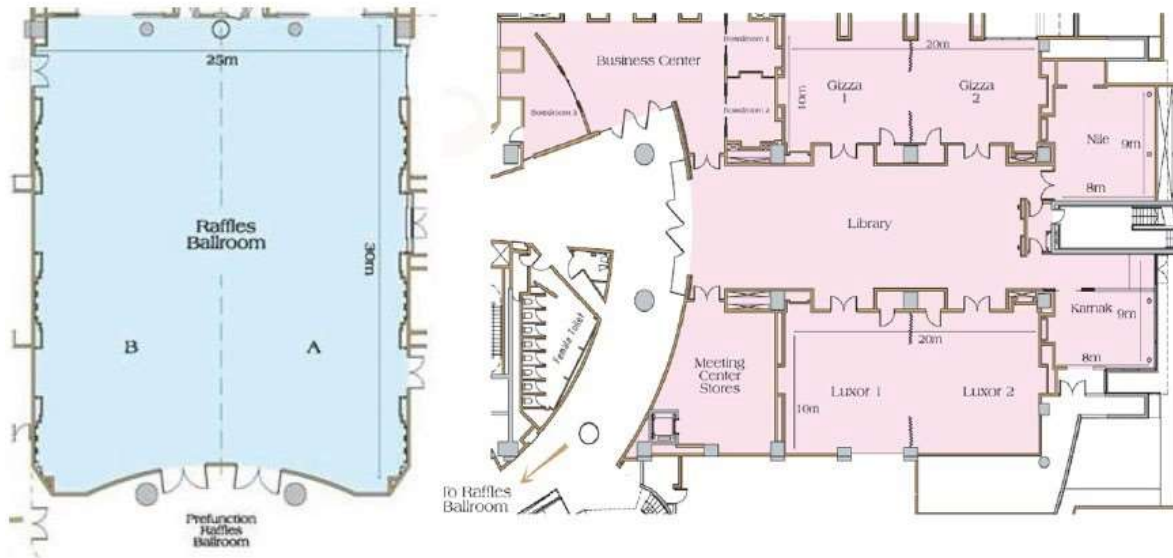


Outdoor Pool



Events and Meetings

- 11 flexible meeting spaces, including Raffles ballroom, library and garden
- Raffles Ballroom, our most exclusive venue, adorned with Swarovski crystal chandeliers, hand carved doors and natural day light making it perfect for both day and evening events
- The Raffles Ballroom has a dedicated outdoor terrace adjacent, which can be used for a shisha area, lounge seating or buffet set up
- Raffles Library - central meeting and networking space with the Meeting rooms, ballroom and dining all on the same floor



Meeting and Events - Capacity

Function Room Specs	Size m L x W x H	Area m ²	Area sqft	Banquet Round Tables	Cabaret Tables of 8	Cocktail	Class Room Tables of 3	Theatre	Board Room	U-Shape
Room	Dimensions			Capacity						
Raffles Ballroom (with stage)	31.75 x 24.52 x 5.9***	778.51	8379.81	350	288	600	210	600	-	-
Raffles Ballroom A	31.75 x 12.12 x 5.9***	384.81	4142.00	150	120	300	100	250	72	78
Raffles Ballroom B	31.75 x 12.1 x 5.9***	384.18	4142.00	150	120	350	100	250	72	78
Gizza	19.75 x 7.1 x 2.9	140.23	1509.50	60	40	60	54	100	42	45
Gizza 1	9.8 x 7.1 x 2.9	69.58	748.95	20	24	25	18	40	18	21
Gizza 2	9.8 x 7.1 x 2.9	70.20	756.59	20	24	25	18	40	18	21
Luxor	19.6 x 9.4 x 2.9	184.24	1983.14	80	64	80	90	120	42	48
Luxor 1	9.7 x 9.4 x 2.9	91.18	981.45	30	32	25	27	50	20	24
Luxor 2	9.8 x 9.8 x 2.9	96.04	1033.76	30	32	25	27	50	20	24
Nile	7.8 x 7.5 x 2.9	58.50	629.68	20	16	20	18	32	12	15
Karnak	7.6 x 5.5 x 2.9	41.80	449.90	10	10*	20	12	21	12	15
Boardroom 1	3.79 x 3.64 x 2.9	13.80	148.54	-	-	-	-	-	5	-
Boardroom 3	4.9 x 7.8 x 3.15	38.22	411.39	-	-	-	-	-	8	-
Aswan 1	16.2 x 11.35 x 3.3	160.00	1723.00	50	32	60	42	60	35	36
Aswan 2	19.33 x 13.92 x 3.3	170.00	1832.00	50	32	80	42	60	35	34
Raffles Garden	-	1,500	16,146	300	224	450	-	-	-	-

*** Ballroom height 5.9m floor to ceiling, the lowest light height from the floor is 4m.

Raffles Ballroom



Gizza Meeting Room



Nile Meeting Room



Luxor Meeting Room



Turkish Penthouse – 441 sqm





*While at Raffles,
why not visit Dubai?*



RAFFLES
HOTELS & RESORTS

Thank You