



S O F I T E L

سوفيتل دبي ذا أوبيليسك  
DUBAI THE OBELISK





S O F I T E L

سوفيتل دبي ذا أوبيليسك  
DUBAI THE OBELISK

A sophisticated and chic address in the epicenter of luxury, **Sofitel Dubai The Obelisk** elegantly merges modern French *art de vivre* and ancient Egyptian heritage with the essence and culture of the UAE.

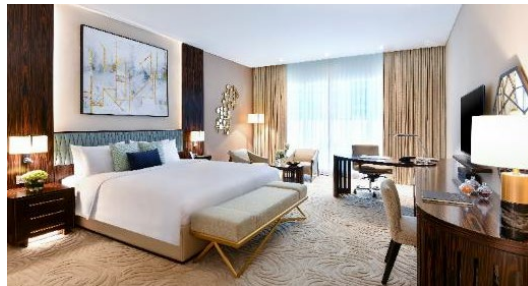
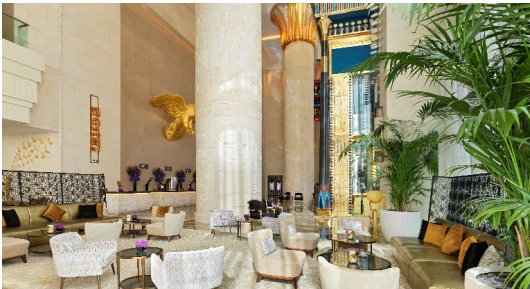
Adorned with a gold pyramidion and in the shape of an obelisk, representative of the Luxor Obelisk currently in Paris, Sofitel Dubai The Obelisk majestically thrones in the heart of Dubai.



# SOFITEL DUBAI THE OBELISK - Overview

***Opened on 29 October 2020***

- Perfect balance of modern French *art de vivre* and ancient Egypt reflective of the renowned design elements of Wafi, a distinctive shopping and leisure destination, including Khan Murjan Souk, Vox Cinema & Magic Planet.
- 594 units total inventory. 498 luxury rooms & suites and 96 furnished and serviced residences.
- Distinctive dining concepts.
- 10 minutes away from Dubai International Airport.
- Close proximity to business district and financial center, Downtown Dubai, Burj Khalifa, La Mer beach, the creek and the major cultural & touristic attractions.



Connected to Khan Murjan and Wafi  
10 minutes from Dubai International Airport  
08 minutes from Downtown

Close proximity to major attractions;

- Business Districts & Financial Centre
- Burj Khalifa
- The Creek
- Dubai Mall
- World Trade Centre
- Port Rashid (cruise terminal)
- Heritage Village
- Dubai Museum
- Gold and Spice Souk
- Dubai Frame



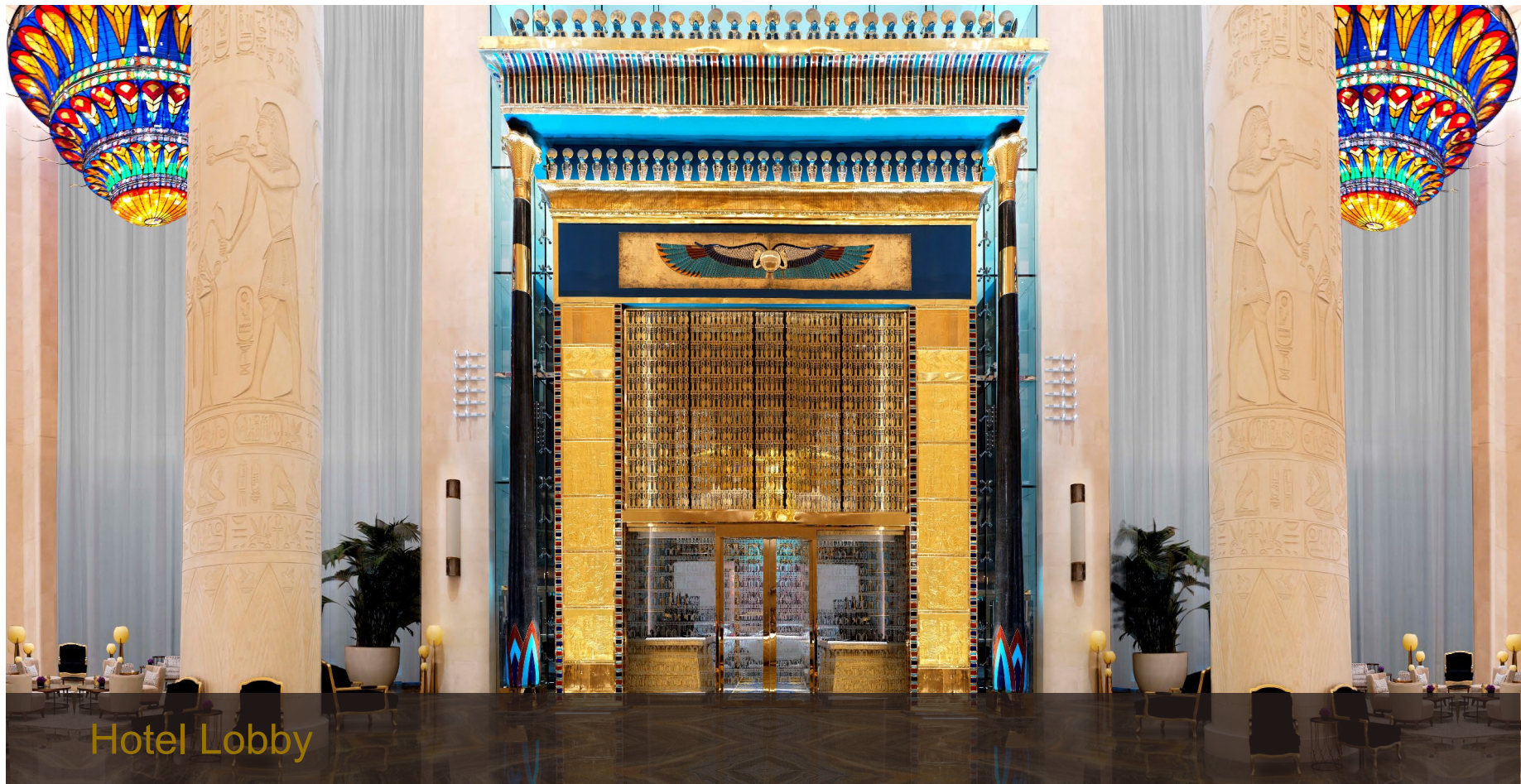




Hotel Lobby







Hotel Lobby







Hotel Lobby



# ROOMS & SUITES

**430 rooms including 56 with Club Millésime access**

Located as of the 19<sup>th</sup> floor offering floor-to-ceiling windows with an abundance of natural light and unparalleled views, including old Dubai, creek, harbor and the iconic city skyline.

The **68 suites** offer glorious living spaces, complemented by 24-hour Majordome (butler) service and Club Millésime privileges.

Designed for discerning tech-savvy business travelers and leisure seekers, the guestrooms and suites provide a digital system controlled by iPads and mobile phones.







## Deluxe Room

Total Unit: 302, including 16 with Club Millésime Access  
Size between: 44 - 49 sqm | 473 – 527 sqft

## Family Room

28 sets of connecting king & twin Deluxe Rooms





## Luxury Room

Total Unit: 112, including 40 with Club Millésime Access  
Size between: 55 - 61 sqm | 592 – 656 sqft







## Panoramic Suite

Total Unit: 20  
Size between: 68 - 72 sqm | 731 – 775 sqft





## One Bedroom Suite

Total Unit: 38

Size between: 82 - 136 sqm | 883 - 1434 sqft







## Opera Suite

Total Unit: 3  
Size between: 161 – 190 sqm | 1732 – 2045 sqft





## Prestige Suite

Total Unit: 4  
Size between: 209 - 268 sqm | 2249 – 2884 sqft





## DESIGNER SUITES

Located on the 47<sup>th</sup>, 48<sup>th</sup> and 49<sup>th</sup> floors, the property features three outstanding suites designed by award-winning firm Duccio Grassi Architects.

Imperial Suite, Presidential Suite “Cleopatra” and Ambassador Suite “Napoleon” are the height of luxury and refinement, combining a European lifestyle design with the essence of Dubai.

الدجاج الإمبراطوري  
The Imperial  
Suite





Ambassador Suite  
"Napoleon"

Total Unit: 1  
Size between: 268 sqm | 2885 sqft



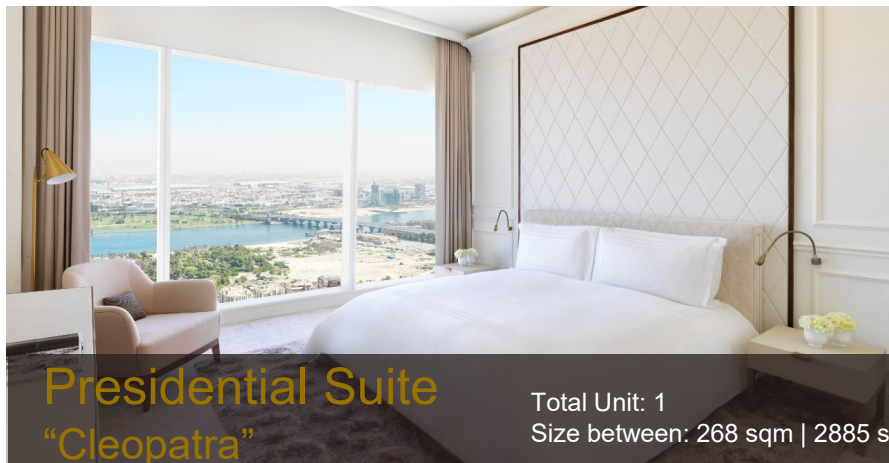












Presidential Suite  
"Cleopatra"

Total Unit: 1  
Size between: 268 sqm | 2885 sqft















## Imperial Suite

Total Unit: 1  
Size between: 553 sqm | 5952 sqft











# CLUB MILLÉSIME

Located on the 51st floor, with its posh interiors, spectacular views and exceptional menu, Club Millésime is a unique venue beyond compare open from 6:00 am to 11:00 pm.

- Personalized check-in & check-out
- Complimentary breakfast at Club Millésime or La Veranda
- Dedicated butler service for suites
- Le Goûter from 2:00pm to 4:00pm
- L'Apéro Chic from 6:00pm to 8:00pm
- Pressing up to two clothing items per stay

Suites with Club Millésime access are located on 19<sup>th</sup> to 24<sup>th</sup> floors







# RESIDENCES

## 96 Furnished and Serviced Residences

- 38 Studio
- 20 One Bedroom
- 20 Two Bedroom
- 18 Three Bedroom

### Features:

- Separate entrance
- Beautifully furnished residences with top-of-the-line and modern appliances
- Two bedroom and three bedroom residences are with maid's room
- Exclusive benefits







## Studio Residence

Total Unit: 38 | 8<sup>th</sup> to 17<sup>th</sup> floor - 2 units per floor  
Size between: 53 - 75 sqm | 570 - 807 sqft





## One Bedroom Residence

Total Unit: 20 | 8<sup>th</sup> to 15<sup>th</sup> floor - 4 units per floor  
Size between: 85- 97 sqm | 914 – 1044 sqft







## Two Bedroom Residence

Total Unit: 20 | 8<sup>th</sup> to 17<sup>th</sup> floor - 2 units per floor  
Size between: 152 - 177 sqm | 1,636 – 1,905 sqft





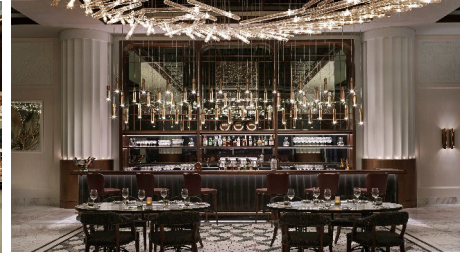
## Three Bedroom Residence

Total Unit: 18 | 8<sup>th</sup> to 17<sup>th</sup> floor - 2 units per floor | 16<sup>th</sup> floor - 1 unit  
Size between: 204 - 240 sqm | 2,196 - 2,583 sqft





# DINING VENUES





Bringing a true French brasserie experience to Dubai, Brasserie Boulud is a new concept by Daniel Boulud, renowned chef-owner of several global award-winning restaurants.

Inspired by the French art de vivre, Boulud's very first restaurant in the Middle East will offer French contemporary cuisine, rooted in tradition.

Drawing on his vast culinary knowledge, Boulud has chosen French Chef de Cuisine Nicolas Lemoyne to take the helm of Brasserie Boulud.

Brasserie Boulud was awarded a **Bib Gourmand by Michelin Guide** for 2 consecutive years in the 2022 and 2023 editions of Michelin Guide Dubai.





# LA VERANDA

As an extraordinary venue, La Veranda is the perfect space for parties, social gatherings, pre or post function area and more.

An indoor alfresco experience featuring a skylight ceiling that changes the mood lighting according to the hours of the day, providing guests the effect of sitting on an outdoor garden terrace in the open azure sky with streaks of cloud trailing across.



# TAIKO

CONTEMPORARY ASIAN  
CUISINE & BAR

Taiko is one of Amsterdam's most popular restaurants conceptualized by Chef Schilo van Coevorden. Taiko Dubai is the brand's first international outpost as well as the first time any Dutch chef's restaurant concept has expanded to the Middle East.

Offering the same contemporary cuisine as Taiko Amsterdam, taste buds will take flight as guests indulge in the flavors and textures of the Far East.





# THE NINE

A British neighborhood restaurant and gastropub, with an ancient Egyptian influence, The Nine eclectic both in atmosphere and design.

Providing a vibrant atmosphere, guests will get the chance to watch the sport games unfold and socialize while enjoying all the British favourites.

Guests are able to select from a constantly changing specials board, showcasing daily specialties.

Accompanying the food menu is the wine list offering organic and biodynamic options as well as a gin trolley, where guests can craft their own favorite cocktail as they look for something a little more refreshing.



# Bijou

PATISSERIE

Modern, elegant and sophisticated, Bijou is set in the heart of the hotel lobby and welcomes guests into a paradise of sweet indulgence.

With bold geometric forms visible on the ceiling, an overall ivory color palette, curving furniture and smooth polished surfaces, the art deco theme is palpable.

Sofitel's signature afternoon tea, Le Goûter, is a unique combination of flavors created with passion and served in a sophisticated jewelry box, unlocked with a special key.

Bijou Patisserie was awarded "Dubai's Best Afternoon Tea" for two consecutive years in 2022 and 2023 by Time Out Dubai Restaurant Awards.





# SOLEIL

POOL & LOUNGE

Sofitel Dubai The Obelisk offers the ultimate in leisure and relaxation.

Featuring an outdoor swimming pool in the shape of the key of the Nile with the symbol of Wafi engraved in the center of the pool in Arabic calligraphy, the pool is neighbored by a sail shaped bar and a series of private cabanas with two featuring their own Jacuzzi.

Featuring private cabanas, aromatic shishas and tantalizing Mediterranean & Levantine inspired menu, this oasis of relaxation serves as pool by day that transform into an exotic lounge after the sun sets.











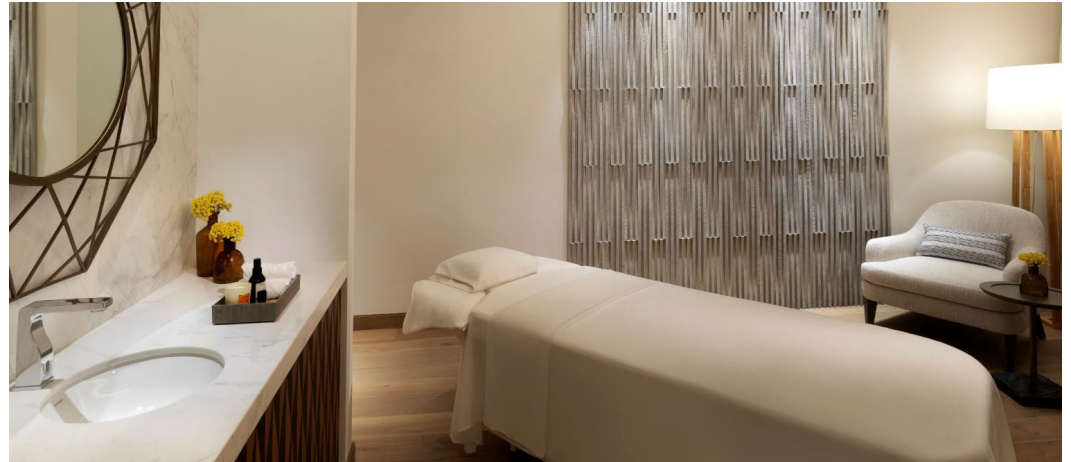
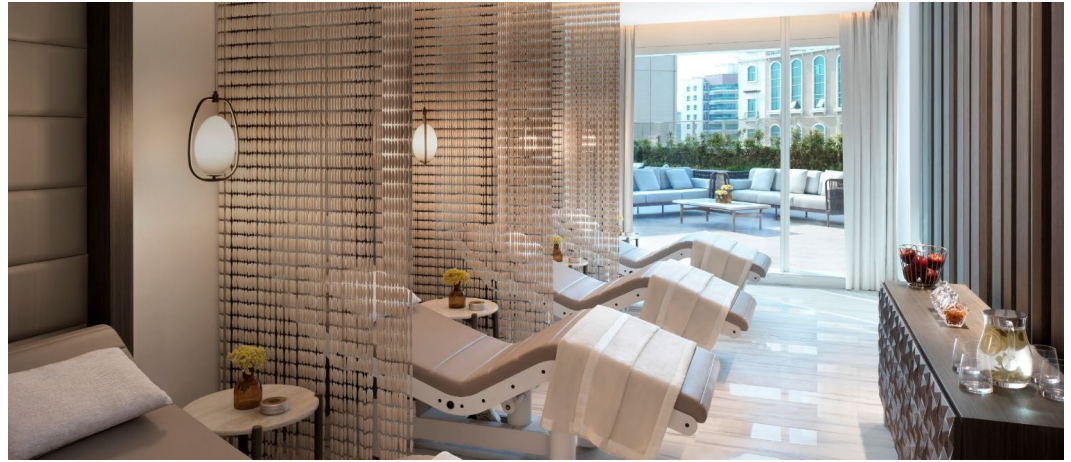




S O F I T E L  
S P A A  
with L'OCCHITANE

- 8 treatment rooms, including couple's treatment room
- Female and male indoor & outdoor relaxation rooms
- Hammam facilities

**Sofitel FITNESS**, provides the perfect setting for working out thanks to a full range of state-of-the-art Technogym equipment and one studio, ideal for group classes.





Targeting little movers and shakers, the *Prince and Princess journey* draws its name and inspiration from the French novella *The Little Prince* and encourages families to explore a world of exciting activities, promising a memorable and engaging adventure for kids throughout their stay.

AstroKids is not just a place for kids to play, but a wonderful expedition into the imagination.



ARTIST IMPRESSION





## L'OBELISQUE BALLROOM

With a dedicated private entrance, two grand staircases lead to a spacious pre-function area filled with natural daylight, guests enter into the stunning L'Obelisque Ballroom which can be divided into three venues and hosting up to 600 guests.

The ceiling of the ballroom is adorned with chandeliers made of Swarovski crystals in the shape of star constellations, offering guests the chance to celebrate their special occasion 'under the stars'.



# L'Obelisque Ballroom

L'OBELISQUE BALLROOM											
VENUE	AREA (M)	LENGTH (M)	WIDTH (M)	HEIGHT (M)	CABERNET (ROUND OF 10)	CABERNET (ROUND OF 8/6)	U-SHAPE	HOLLOW SQUARE	CLASSROOM	THEATER	COCKTAIL
L'Obelisque 1	188.1	10.45	18	4.40	110	88	57	60	108	168	150
L'Obelisque 2	236.16	13.12	18	4.40	120	96	60	66	108	216	225
L'Obelisque 3	224.64	12.48	18	4.40	120	96	60	66	108	216	225
L'Obelisque Ballroom (1 + 2 + 3)	648.9	36.05	18	4.40	400	320	120	138	324	624	600
L'Obelisque Pre-function Area	546.26	49.5	5.83	4.19	-	-	-	-	-	-	250
Ballroom Entrance (Lobby Level)	267.57										







## MAGNIFIQUE MEETINGS

Guests enjoy access to over 2,300 sqm of meeting space including 10 meeting venues and state-of-the-art ballroom ideal for the most sought after social gatherings.

The names of the meeting venues symbolize the grand voyage of the Luxor Obelisk from the temple of Luxor in Egypt all the way to the arrival in Place de la Concorde in Paris.



# Magnifique Meetings

2 <sup>ND</sup> FLOOR   4 <sup>TH</sup> FLOOR											
VENUE	AREA (M)	LENGTH (M)	WIDTH (M)	HEIGHT (M)	CABERNET (ROUND OF 10)	CABERNET (ROUND OF 8/6)	U-SHAPE	HOLLOW SQUARE	CLASSROOM	THEATER	COCKTAIL
Thebes 1   Concorde 1	43.7	8.44	5.18	4.19	20	16	21	24	24	40	30
Thebes 2   Concorde 2	43.7	8.44	5.18	4.19	20	16	21	24	24	40	30
Thebes 1 + 2   Concorde 1 + 2	89.21	8.44	10.57	4.19	50	40	33	42	45	90	65
Al Neel 1   La Seine 1	33.87	6.82	4.96	4.19	20	16	21	18	18	35	30
Al Neel 2   La Seine 2	24.55	5	4.91	4.19	-	12	15	12	12	24	25
Al Neel 1 + 2   La Seine 1 + 2	68.54	6.82	10.05	4.19	-	32	27	24	24	60	55
Alexandria   Paris (Green Eco Concept)	27.18	5.91	4.6	4.19	-	12	15	12	12	35	25
Pre-Function Area (2 <sup>nd</sup> Floor & 4 <sup>th</sup> Floor)	132.87	15.45	8.6	3.06	-	-	-	-	-	-	60
La Veranda					100	60	-	-	-	-	110

Total Meeting Rooms Area per floor – 184.93 sqm | Total Pre Function Area per floor – 132.87 sqm















# MAGNIFIQUE MEETINGS

---

Guests will have access to over 2,300 square meter of meeting space including 10 flexible venues and one state-of-the-art ballroom ideal for the most sought after social gatherings.

---

Venues / GF and Ballroom Level	Area sqm
L'Obelisque	688.54
L'Obelisque 1	208.63
L'Obelisque 2	246.37
L'Obelisque 3	233.54
Pre-Function	561.22
L'Obelisque Main Lobby (GF)	267.57

Venues / Level 2	Area sqm	Max Capacity
Thebes 1	49	64
Thebes 2	50.5	64
Al Neel 1	43.6	60
Al Neel 2	36.7	48
Alexandria	45.32	57
Veranda	257	125
Pre-Function	199.07	

Venues / Level 4	Area sqm	Max Capacity
Concorde 1	49	64
Concorde 2	50.5	64
La Seine 1	43.6	60
La Seine 2	36.7	48
Paris	45.32	57
Pre-Function	199.07	





# Commitment to Sustainability

In line with the UAE Vision 2021 on improving the quality of air, preserving water resources, increasing the contribution of clean energy and implementing green growth plan, Sofitel Dubai The Obelisk is dedicated to ensuring a sustainable environment and infrastructure, and has reaffirmed its commitment to implement measures upon its launch.

## Key initiatives:

- Zero plastic policy
- Increase of digital touchpoints
- Decrease of carbon footprint
- Reducing Food & Beverage waste
- Educating on sustainability



Look forward to welcoming you soon...







S O F I T E L

سوفيتل دبي ذا أوبيليسك  
DUBAI THE OBELISK

THANK YOU