

A night-time photograph of a modern hotel complex in Dubai. The image features several tall, illuminated skyscrapers with a mix of white and blue facades. In the foreground, there is a well-lit outdoor plaza with several palm trees whose trunks are wrapped in warm white lights. People are seen walking and sitting in the plaza. The sky is a deep twilight blue. The Sofitel logo and name are overlaid on the right side of the image.

S O F I T E L

سوفيتل جميرا بيتش دبي  
DUBAI JUMEIRAH BEACH



A night-time photograph of the Sofitel Dubai Jumeirah Beach hotel. The building is a tall, modern skyscraper with a distinctive facade of illuminated, geometric patterns. The sky is a deep blue, and the city lights are visible in the background. In the foreground, there are several palm trees, some of which are wrapped in warm white lights. A modern, low-rise building with large glass windows and outdoor seating is visible on the left side of the image. The overall atmosphere is vibrant and luxurious.

SOFITEL

سوفيتل جميرا بيتش دبي  
DUBAI JUMEIRAH BEACH

Situated in the vibrant heart of Jumeirah Beach Residence and the Walk, Dubai's most popular recreation promenade and retail destination The Beach, discover this elegantly luxurious hotel blending French art de vivre with Arabian culture.



A night-time photograph of the Sofitel Dubai Jumeirah Beach hotel. The building is a tall, modern skyscraper with a distinctive facade of illuminated balconies. The sky is a deep blue, and the hotel's lights are glowing. In the foreground, there are palm trees, some of which are wrapped in warm white lights. A lower-level building with large glass windows and outdoor seating is visible on the left. The overall atmosphere is sophisticated and urban.

SOFITEL

سوفيتل جميرا بيتش دبي

DUBAI JUMEIRAH BEACH

## DISTINCTIVE FEATURES

- Beach-front five-star luxury hotel
- 444 sea view luxury rooms with balcony
- Distinctive Dining concepts
- Elegant & spacious meeting & ballrooms
- Infinity pool overlooking the Arabian Gulf
- Close proximity to business district and major attractions

## LIFE IS MAGNIFIQUE AT SOFITEL DUBAI JUMEIRAH BEACH

Sofitel Dubai Jumeirah Beach is set under an infinite summer sky where the holiday spirit is always in fashion and the days are eternally long and soaked in sunshine. It has a blend of French “Art de recevoir” and refined contemporary Arabian opulence that is both warm and welcoming. Welcome to where the land meets the balmy azure waters of the Arabian sea.

Overlooking the sea, life is truly beautiful. Leave the world behind as our elegant surroundings whisk you away to your chosen pleasure. Whether your fancy is reclining at our pool, taking a short stroll down the nearby beach or a work out in our Sofitel Fitness, everything you need is right where you are.

Combining sea, shopping and relaxation with a carefree flair, the hotel is a sophisticated delight set in the heart of Dubai’s bustling urban beach surroundings.



01  
LOCATION



## THE ADDRESS

In the heart of the city's most hip and vibrant district, the hotel is within walking distance, or just a short car ride from Dubai's famous boutiques, shopping malls, restaurants, business hubs and tourist attractions. With easy access to and from the airports, life could not be more charmed.

Dubai International Airport (38km)

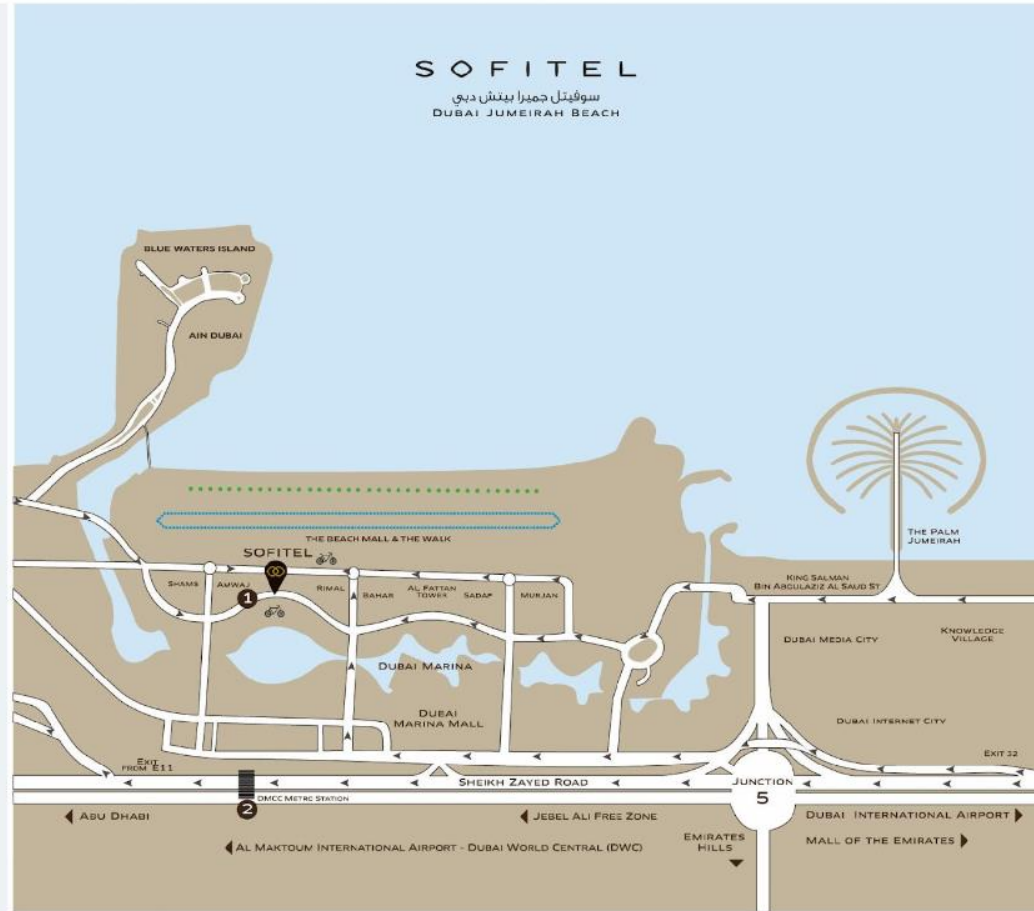
Al Maktoum International Airport (36 km)

Abu Dhabi International Airport (100 km)

DMCC Metro Station (1.6km)

JBR 2 Tram Station (0.3 km)

-  **SOFITEL DUBAI JUMEIRAH BEACH**
- 1**  **NEAREST TRAM STATION**  
JUMEIRAH BEACH RESIDENCE 2
- 2**  **NEAREST METRO STATION**  
DMCC METRO STATION
-  **JOGGING TRACK (3.5km)**
-  **JBR PUBLIC BEACH**
-  **NEAREST RENTAL BICYCLES**



02  
ROOMS AND SUITES





## GUEST ROOMS

Wake up in a postcard. With private balconies looking out over a true blue sea, Sofitel Dubai Jumeirah Beach is a statement in haute living. Each of our 444 rooms and suites include the trademark MyBed™ concept, an all feather bed and extra light down duvet enriched by a pillow menu for bespoke comfort.

### FEATURES:

- All rooms with sea view and balcony
- MyBed™ concept
- Free Wi-Fi Internet access

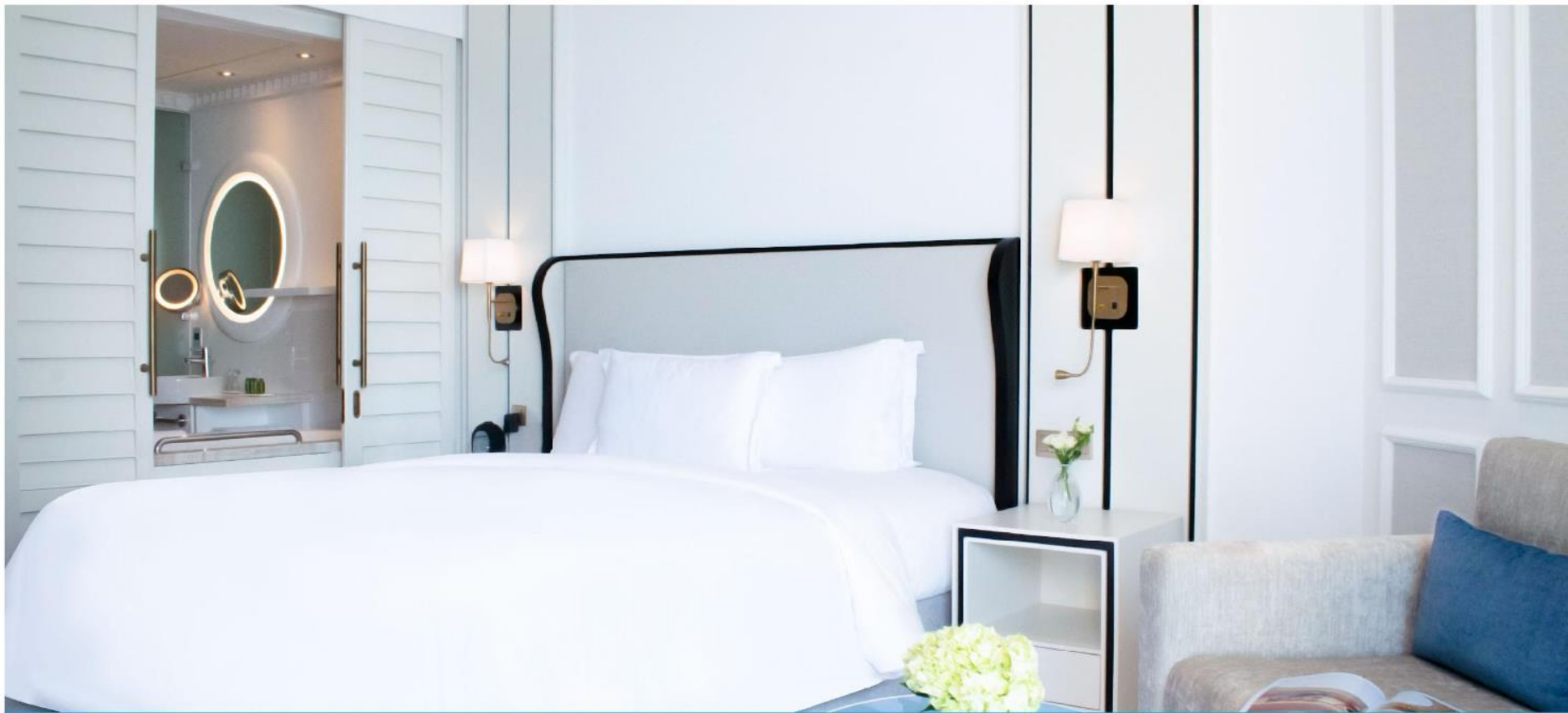
### SPECIFICATIONS:

- Total of 444 Rooms
- 41 Suites
- Connecting Rooms: 132
- Connecting Suite: 1
- Disabled Rooms: 6

*Club and suite guests can enjoy the exclusivity and limitless luxury of our executive lounge Club Millésime.*

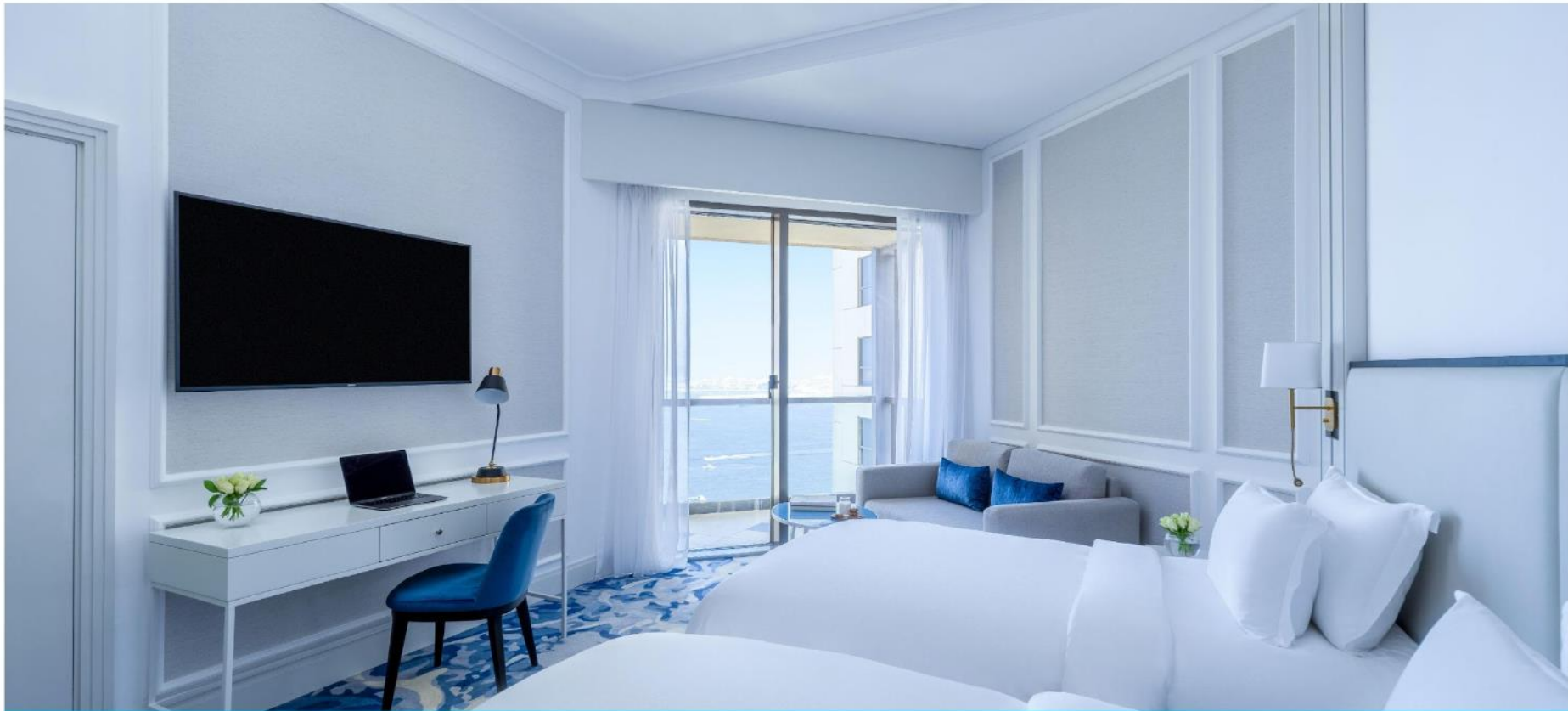






Superior King Room | Size: 35 sqm





Superior Twin Room | Size: 35 sqm

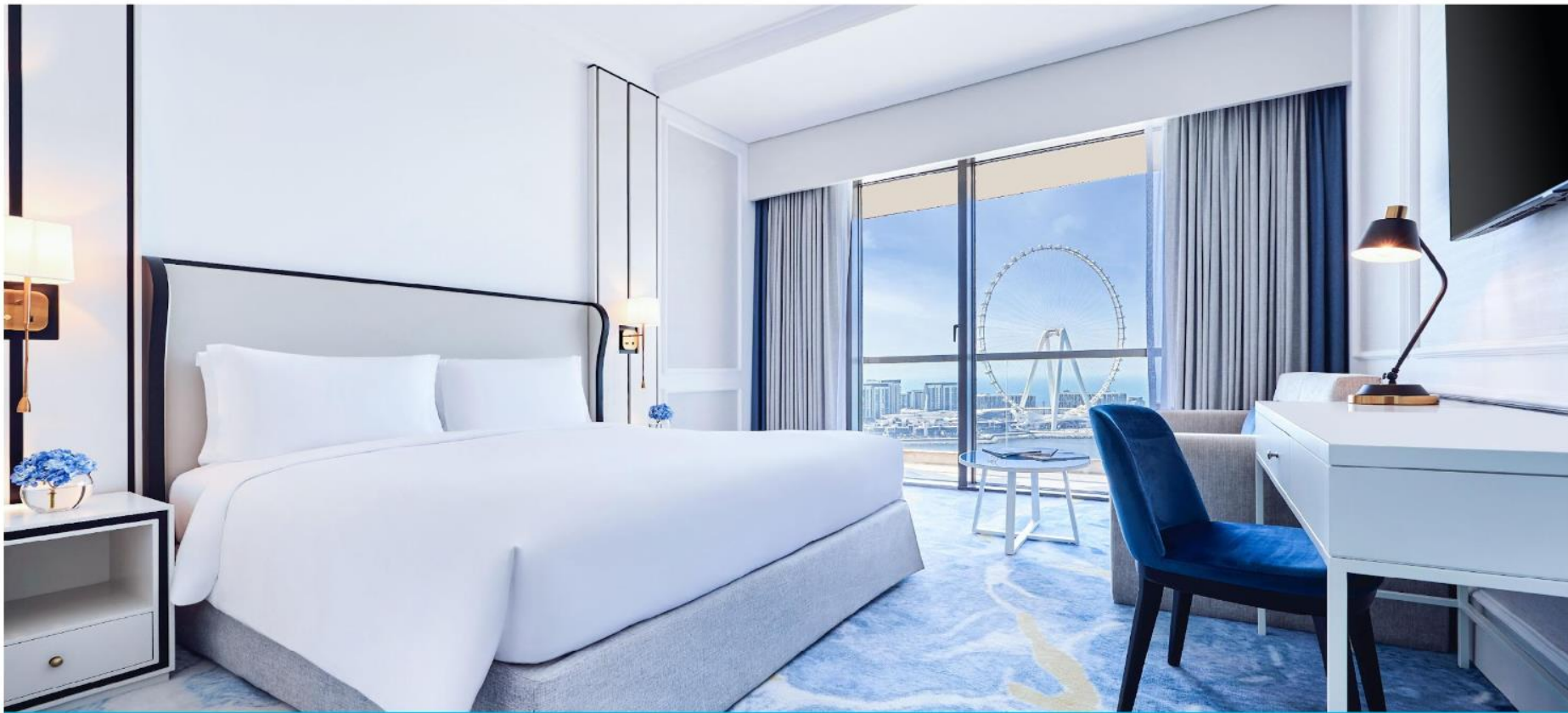




Luxury Room | Size: 36 sqm







Luxury Club Room | Size: 36 sqm



## SUITES

Each suite has a private balcony with views across the Arabian Gulf. Features French “Art de Recevoir” and refined modern décor with white walls and muted accents of blue, black, and gold, clean lines, and minimalist furniture reflecting natural materials and natural light. The style exudes a comfortable and casual elegance that is never ostentatious.

### FEATURES:

- MyBed™ concept and pillow menu availability
- All suites with sea view and private balcony
- Club Millésime access
- Airport pick-up and drop off at a cost
- Free Wi-Fi Internet access
- Lanvin bathroom amenities
- Nespresso coffee machines
- Separate living room

### SPECIFICATIONS:

Prestige Suites: 12

Junior Suites: 27

Opera Suites: 2





Junior Suite | Size: 50 sqm

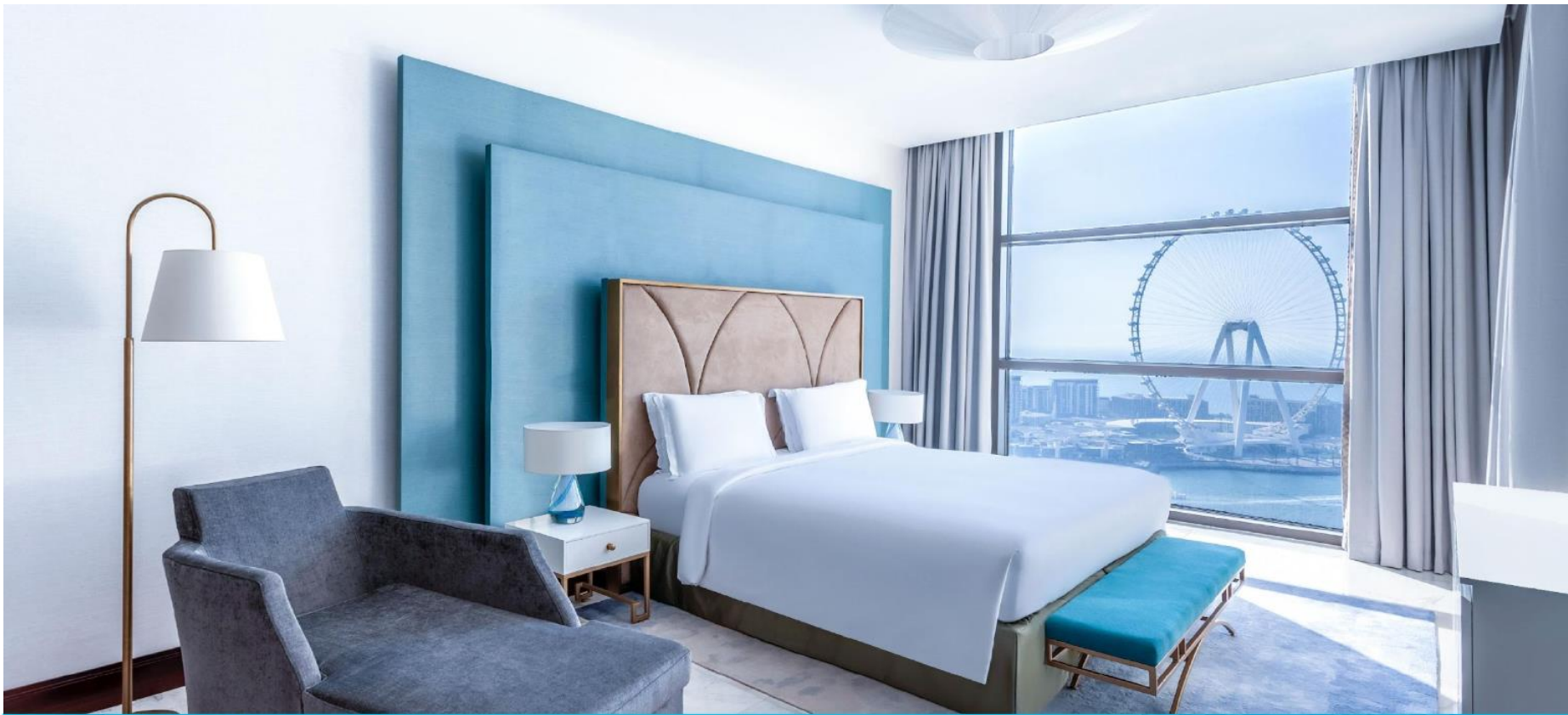






Prestige Suite | Size: 65 sqm





Opera Suite | Size: 95 sqm



03

MAGNIFIQUE MEETINGS





## MAGNIFIQUE MEETING ROOMS

We specialize in successful meetings infused with unrivaled “Art de Vivre”. An innovative concept in event planning, Magnifique Meetings focuses on your objectives and desired experiences.

Food and beverages are designed to complement your meeting objectives to inspire and delight you to work at your creative best. Our large pre-function area can be used for setup, registration and coffee breaks.

### FEATURES:

- 5 elegantly appointed meeting rooms including the ballroom.
- Ballroom which can be divided into two distinct spaces.
- Personalised chef-crafted menus for your events.
- Elegant and spacious Pre Function Area.
- Podium, microphones and other additional audio visual equipment available upon request.





Monte Carlo Ballroom





Cannes







Menton





Antibes





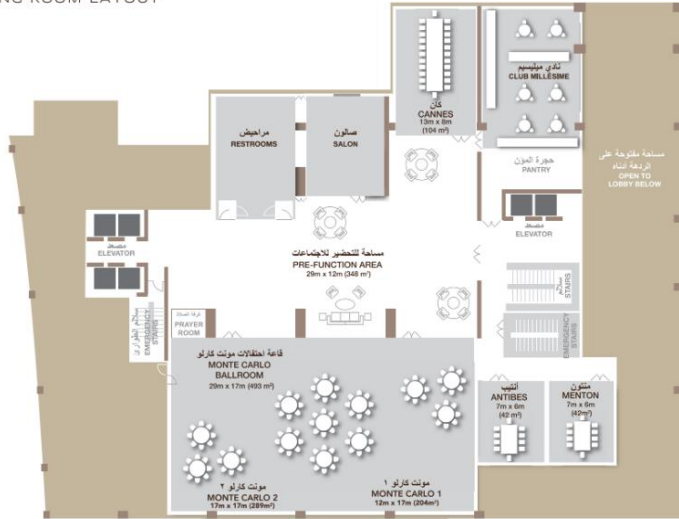
Pre-function area





# FLOOR PLAN

تخطيط قاعة الاجتماعات  
MEETING ROOM LAYOUT



# CAPACITY CHART

Meeting Rooms	Surface Area (SqM)	Length (M)	Width (M)	Ceiling Height (M)	Surface Area (SqF)	Classroom	Theatre	U-Shape	Board Room	Dinner	Cocktail	Cabaret
Cannes	104	13	8	3.9	1119	40	70	25	24	60	75	25
Antibes	42	7	6	3.9	452	18	30	15	12	20	N/A	14
Menton	42	7	6	3.9	452	18	30	15	12	20	N/A	14
Monte Carlo 1	204	12	17	6.2	2195	90	120	45	22	120	140	70
Monte Carlo 2	289	17	17	6.2	3111	160	200	60	30	160	180	112
Monte Carlo Ballroom	483	29	17	6.2	5306	310	400	120	60	350	380	180
Pre-Function Area	348	29	12	4.3	3745	-	-	-	-	-	-	-

04  
WEDDINGS



## MEMORABLE WEDDINGS

Let Sofitel Dubai Jumeirah Beach be the canvas for your dream wedding, henna, or engagement party. Inspired by your dream, our Magnifique wedding planners will fulfil all your heart's desires.

Our personalized service and attention to detail, complemented by a customized menu from the chef, will make your wedding day extra special! A wedding with natural light and a warm sea breeze on the charming terrace overlooking the sea or a cosy setting in the luxurious surroundings of the grand ballroom on the Magnifique meeting floor, your indoor or outdoor event inspired by the romance of France will be a day to remember.

Indulge in a magnificent celebration of your wedding day with elegant service, sumptuous cuisine and a picturesque setting.





Pre-function area







Outdoor Plantation Terrace



05

FOOD AND BEVERAGES





A.O.C International buffet is an all-day dining concept created with the introduction of classical oversized French panels brings a French cafe experience to a luxurious space. The restaurant offers diverse cuisine from fresh salads, a variety of cheeses, pasta prepared at live cooking stations and a wide selection of desserts.

#### OPERATIONAL HOURS

6.30 am to 10:30 pm (Daily)







A well-curated wine list, fresh seafood, raclette, and decadent desserts complement the interior with a garden-like atmosphere. This is our little Parisian corner, **Plantation Brasserie, Bar & Terrace**. A perfect spot for a casual rendezvous or an a la carte menu from breakfast to dinner. Homemade specialties, yet contemporary, make for a memorable culinary journey unlike any other.

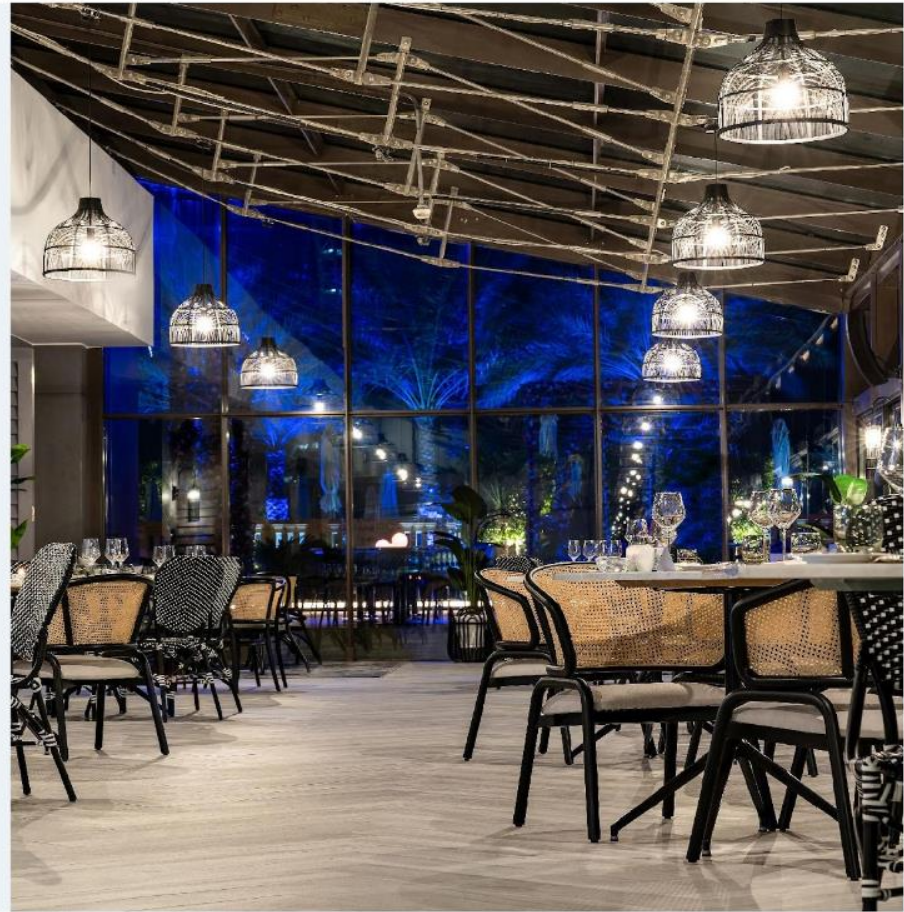
**OPERATIONAL HOURS (Plantation Brasserie)**

8 am to 2 am (Sunday to Friday)

8 am to 12 noon, 6 pm to 2 am (Every Saturday)

**OPERATIONAL HOURS (Plantation Bar)**

12 noon to 2 am (Daily)

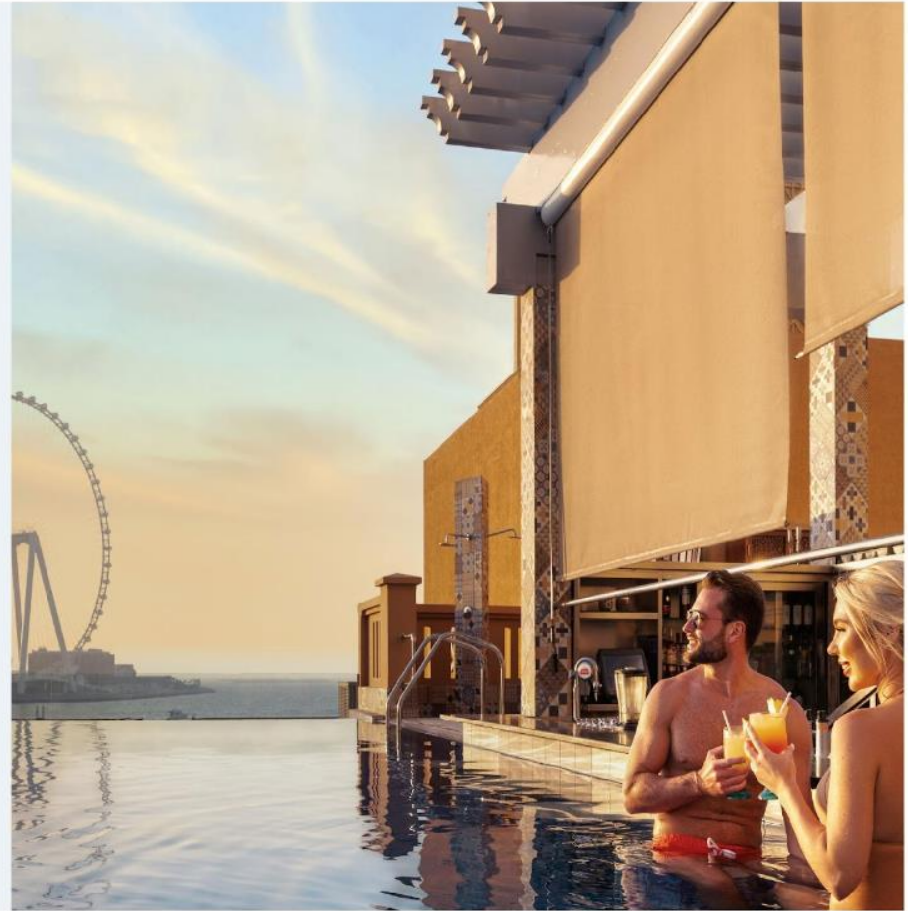






Next to the hotel's infinity pool is a lounge that epitomizes Dubai at its best, with perfect sunset views, an undeniably impressive skyline lighting up the evening sky, and all the atmosphere of the vibrant city. Promising an optimal level of service where you can indulge in light meals and drinks and host unforgettable soirees by the pool.

**OPERATIONAL HOURS**  
10 am to 9 pm (Daily)





Café Concierge offers a wide selection of delectable treats and is the perfect place for a moment's pause on a busy day or a relaxing weekend afternoon. A classic French afternoon treat you must try is Le Goûter, a box of freshly baked scones, lemon cake, financier, raspberry macaroon, chocolate éclair, fresh raspberry tart, and Swiss rolls, perfectly accompanied by Chantilly cream, blueberry compote, and Nutella. Combine these French gourmandises in the late afternoon with a selection of teas and coffees.

**OPERATIONAL HOURS**  
8 am to 11 pm (Daily)



07  
FACILITIES



## INFINI POOL

Overlooking the Arabian sea and The Palm Jumeirah and a sea view pool with al fresco lounge can be found on Level P3. Beach aficionados will enjoy the hotel's location for sunbathing with direct access to the sandy public beach.

Daily 7 am to 8 pm

Complimentary beach kits are available to hotel guests at the Sofitel Fitness reception.





## **SOFITEL FITNESS**

Health Club overlooking Dubai Marina with state of the art fitness equipment, sauna and steam room open for 24 hours.

Sofitel Fitness Memberships are also available.



## CLUB MILLÉSIME

Club and Suite guests can experience our exclusive executive lounge, Club Millesime. Enjoy a sumptuous à la carte breakfast in a relaxed private setting. In the afternoon, our chef prepares a Le Goûter or afternoon tea with a selection of decadent snacks and light refreshments. Inspired by the cultural and culinary tradition of L'Apéro, we also invite our guests to join us for a convivial evening of socializing and indulgence.

### OPERATIONAL HOURS

7 am to 8 pm

Le Goûter (Afternoon Tea) 2 pm to 5 pm  
L'Apéro Chic (Happy Hour) 6 pm to 8 pm

### FEATURES

- Private check-in
- Afternoon treats & coffee/tea
- Sophisticated atmosphere
- High speed Wi-Fi



09

NEARBY ATTRACTIONS







Flying Cup - Dining in the sky



Aqua Fun Water Park



Walking distance to the Dubai Marina Mall



1 minute walk to the JBR Beach







Dubai's popular recreation promenade "The Walk"



Restaurant, shopping & retail destination



Ain Dubai



S O F I T E L  
HOTELS & RESORTS

