

LIVE THE
FRENCH WAY
IN ABU DHABI



S O F I T E L

أبوظبي كورنيش
ABU DHABI CORNICHE



ACCESSIBILITY

FROM SOFITEL BASED IN CITY CENTER

From	Time	By
Abu Dhabi International Airport	29 min	Car
Abu Dhabi National Exhibition Centre	17 min	Car
Louvre Museum *	14 min	Car
Ferrari World/ Yas Mall/ Yas Waterworld*	25 min	Car
Saadiyat Island *	16 min	Car
Marina Mall*	19 min	Car
Dubai International Airport	1 h 40 min	Car
The Mall, WTC	10 min	walk
Corniche Beach*	8 min 21 min	Car walk

* COMPLIMENTARY SHUTTLE OFFERED



NEAR BY ATTRACTIONS

Louvre Museum & Saadiyat Cultural District

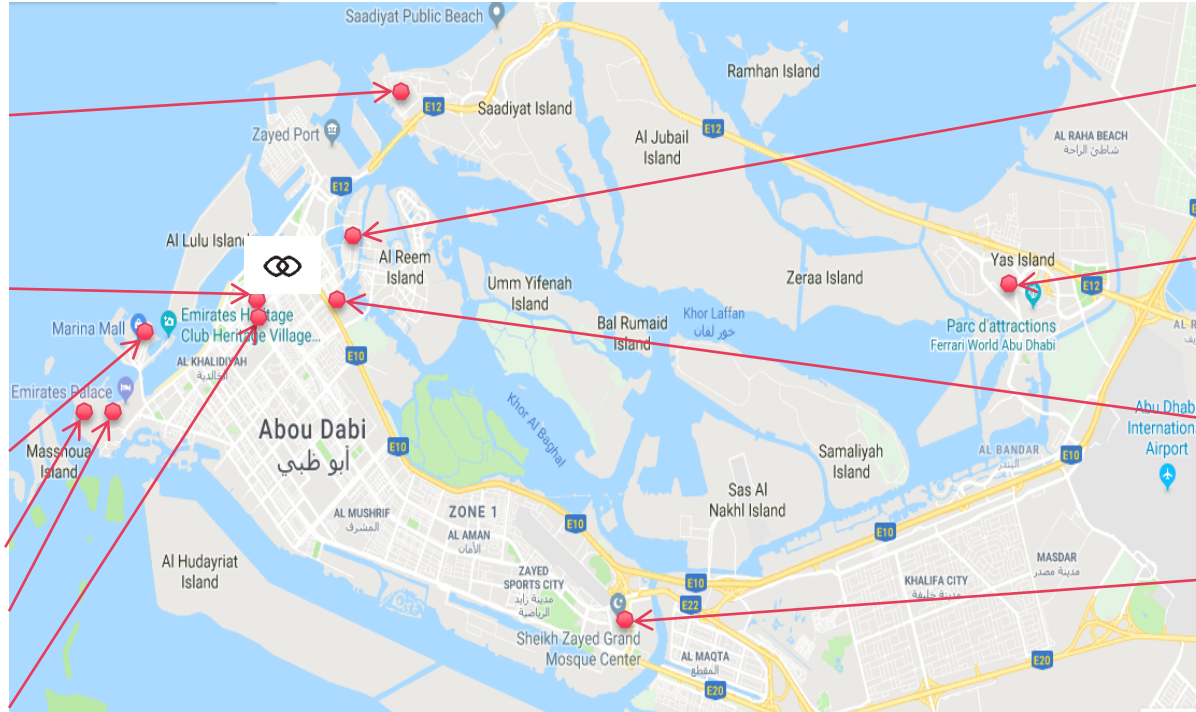
Old Souk

Marina Mall & Heritage Village

Qasr Al Watn

Emirates Palace

Qasr Al Hosn



Galleria Mall

Yas Waterworld, Ferrari World & Yas Mall

Abu Dhabi Mall

Sheikh Zayed Grand Mosque



UNITED ARAB EMIRATES





SOFITEL
HOTELS & RESORTS
أبوظبي كورنيش
ABU DHABI CORNICHE

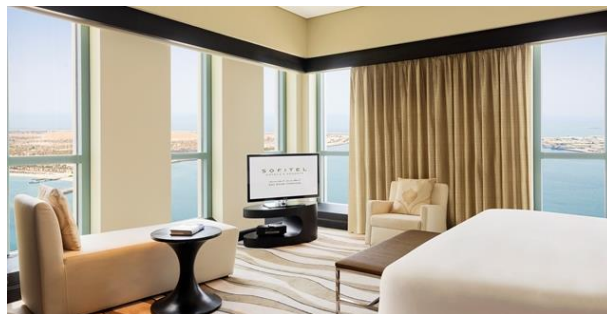
Superior Room – City View



Luxury Room – Sea View

280 ROOMS AND SUITES

Type	Number	Size	View	Bed
Superior Room	99	42 sqm	City & Saadiyat Island	One king bed or two twin beds
Luxury Room	94	42 sqm	Sea View	One king bed or two twin beds
Luxury Room Club Sofitel	40	43 sqm	Sea View – City & Saadiyat Island	One king bed or two twin beds
Prestige Suite	24	78 sqm	Sea View – City & Saadiyat Island	One king bed
Opera Suite	19	85 sqm	Sea View – City & Saadiyat Island	One king bed
Imperial Suite	4	125 sqm	Sea View	One king bed



ROOM TYPES



Imperial Suite 125 sqm



Prestige Suite 78 sqm



Superior Twin 42 sqm



Luxury Club Room 43 sqm



Opera Suite 85 sqm



Luxury Twin 42 sqm

SERVICE & FACILITIES

- 24 Hours Butler Service
- 24 Hours Concierge
- Multilingual Staff
- Complementary WIFI
- Business Centre
- Limousine Service On Request
- Daily International News Papers
- Laundry & Dry-cleaning Services
- Complementary Valet Parking Services
- Complimentary Access To Sauna, Steam Room, Swimming Pool And So Fit Gym
- Hair & Beauty Salon

- Club Millésime – Executive Lounge (Opening From 6am To 11pm)
- Complimentary Shuttle To Local Attractions: Louvre Museum, Yas Island, Corniche Beach And Marina Mall
- Bedrooms For Physically Challenged Guests

In Room

- Luxurious MyBed™
- Individual Air-conditioning Control
- Safe Deposit Box
- Crib And Extra Child Bed On Request
- Telephone

- Coffee & Tea Making Facilities
- Free Mineral Water
- Work Desk
- Minibar
- Interactive TV With International Channels With USB Plugging System
- Spacious Bathroom (Rain-shower, Bathtub And Bidet)
- Electrical System: 220 / 240 V AC (Adapters Are Available On Request)
- Keycard-Operated Door Locks
- Iron / Ironing Board
- Hair Dryer



CORNICHE RESTAURANT

All Day Dinning Restaurant

Opening for breakfast, lunch and dinner
Total Capacity: 300 seats



PARMIGIANA

Italian Restaurant

Serving delicious Italian cuisines with an amazing view of the Arabian Gulf

Opening for lunch and dinner

Capacity: 60 seats



GRILLS @ CHILL'O

Arabic and Mediterranean cuisines
by the pool

Opening from 9am to 12mn
Capacity: 100 seats



JAZZ N' FIZZ

Jazz Bar on the 36th and 37th floors
overlooking the city lights

Opening from 5pm to 3am
Capacity: 120 seats



LE CAFE LOBBY LOUNGE

French and Middle Eastern pastries

Opening from 6am to 2am and
from 6am to 9pm
Capacity: 40 seats



FRENCH BAKERY CORNER

A cozy café lounge best for freshly baked breads, pastries, cakes and express breakfast.

Opening from 6am to 9pm
Capacity: 40 seats



CLUB MILLÉSIME

Executive lounge at the top floor for suite and club room bookings. Breakfast and all day refreshments are served

Opening from 6am to 8pm

Capacity: 30 seats





SWIMMING POOL



The free-form pool offers amazing view of the Corniche and the Arabian Gulf

Opening from 7am to 9pm



WELL-BEING & SPA

SOFITEL FITNESS

Equipped with the latest techno gym tools

Opening from 5am to 10pm

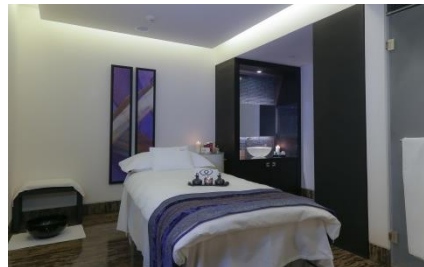


WELL-BEING & SPA

SOFITEL SPA

Six Treatment Rooms
Sauna and Steam Room

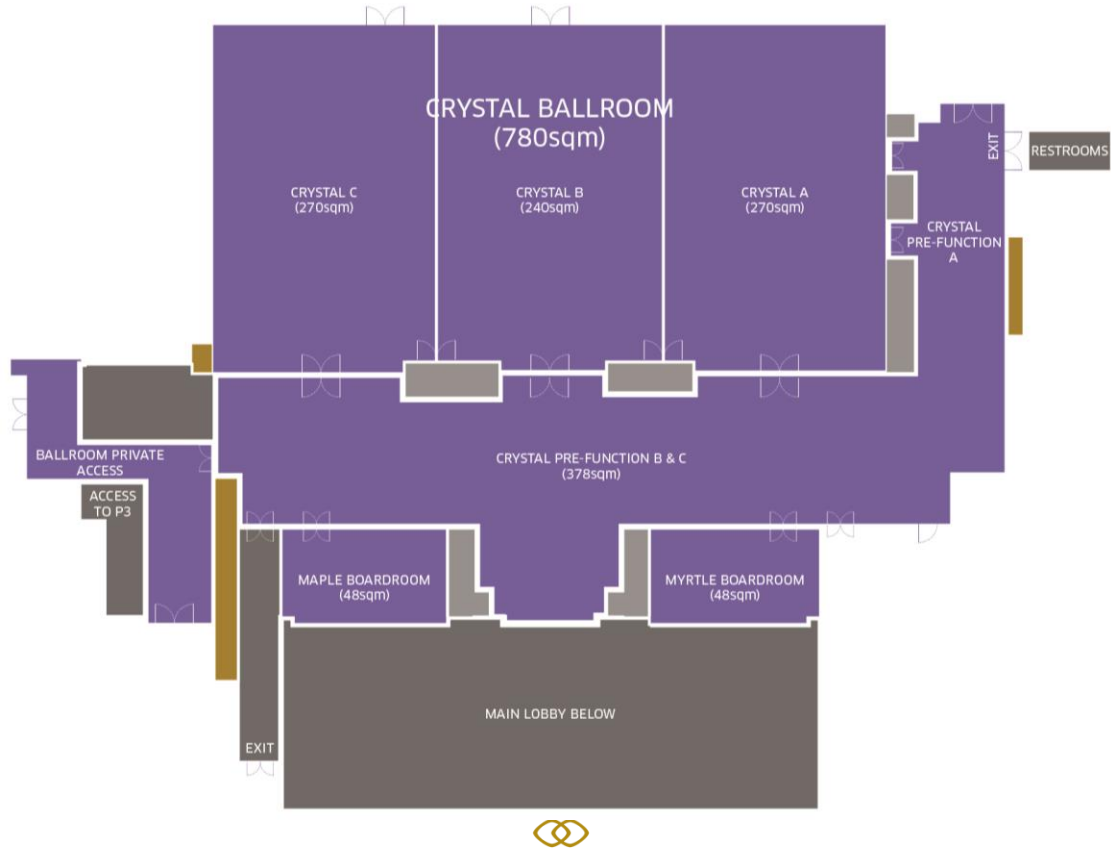
*Opening from 9am to
10pm*





SOFITEL
HOTELS & RESORTS
ابوظبي كورنيش
ABU DHABI CORNICHE

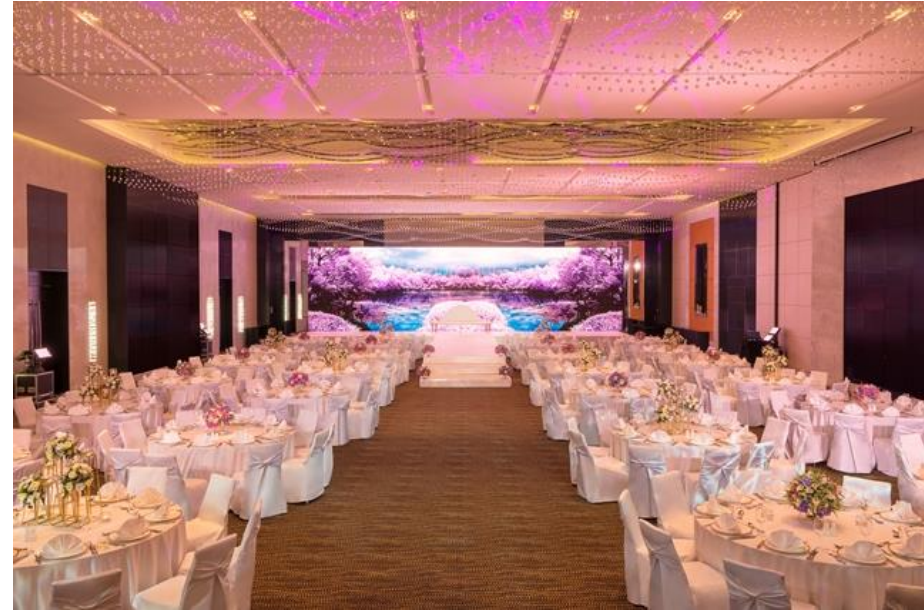
FLOORPLAN LEVEL 2



CRYSTAL BALLROOM



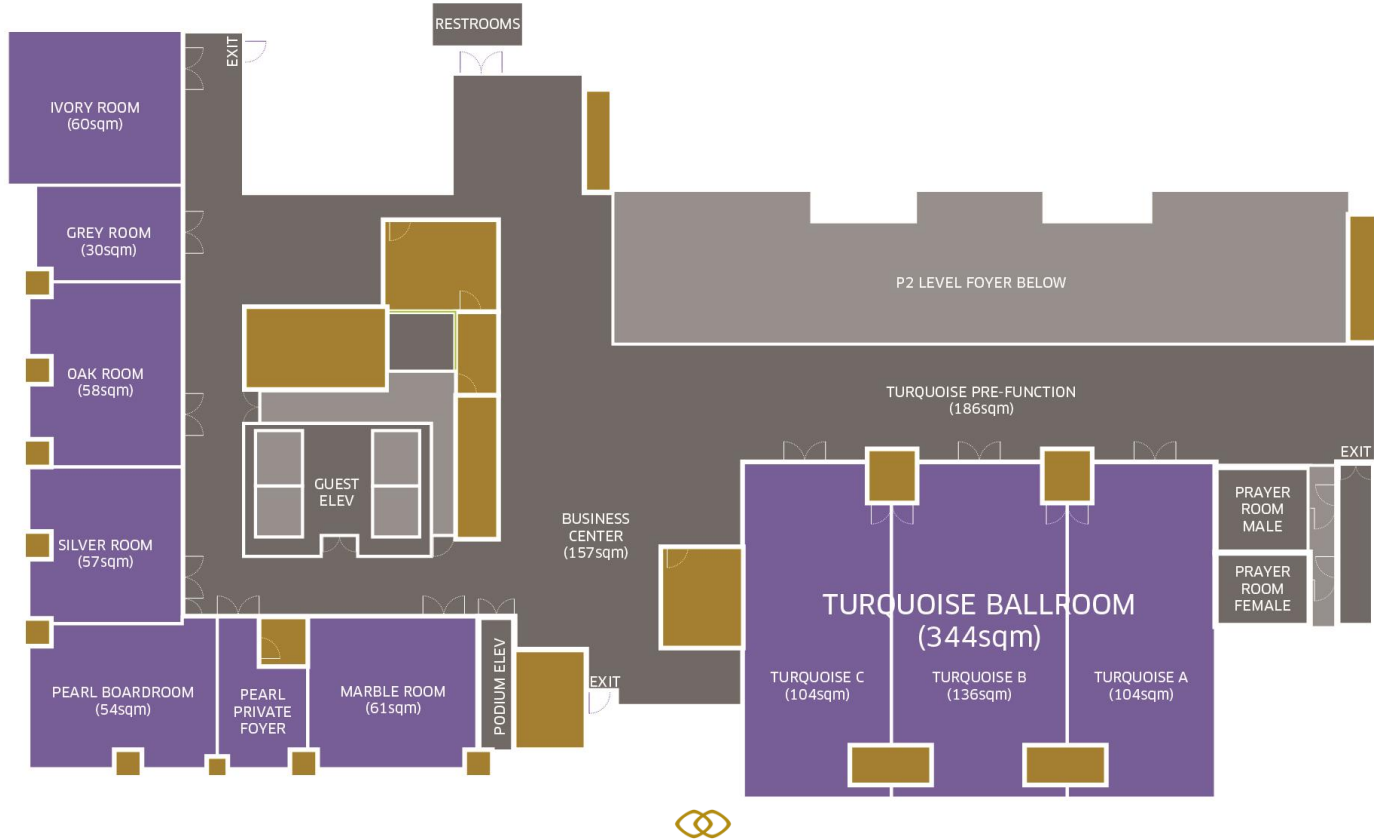
BRIDAL ROOM



CRYSTAL WEDDING SET UP



FLOORPLAN LEVEL 3



TURQUOISE BALLROOM



TURQUOISE WEDDING SET UP



IVORY MEETING ROOM



MARBLE MEETING ROOM



PEARL BOARDROOM



CAPACITY CHART

Venue	Surface	Height	Floor	Theatre	U-shape	Boardroom	Classroom	Banquet
Crystal Ballroom	780m ²	6.0m	2 nd	768	117	105	414	600
Crystal Ballroom A	270m ²	6.0m	2 nd	280	51	45	108	200
Crystal Ballroom B	240m ²	6.0m	2 nd	280	51	45	108	200
Crystal Ballroom C	270m ²	6.0m	2 nd	280	51	45	108	200
Crystal Pre-Function	378m ²	9.5m	2 nd	-	-	-	-	-
Maple Boardroom	48m ²	2.8m	2 nd	-	-	15	-	-
Myrtle Boardroom	48m ²	2.8m	2 nd	-	-	15	-	-
Pearl Boardroom	54m ²	3.5m	3 rd	-	-	16	-	-
Turquoise Meeting Room	344m ²	3.5m	3 rd	240	53	68	132	180
Turquoise Meeting Room A	104m ²	3.5m	3 rd	80	30	26	30	60
Turquoise Meeting Room B	136m ²	3.5m	3 rd	80	30	26	30	60
Turquoise Meeting Room C	104m ²	3.5m	3 rd	80	30	26	30	60
Turquoise Pre-Function	186m ²	3.5m	3 rd	-	-	-	-	-
Marble Room	61m ²	3.5m	3 rd	40	18	14	18	30
Silver Room	57m ²	3.5m	3 rd	30	15	14	18	30
Oak Room	58m ²	3.5m	3 rd	30	15	14	18	30
Grey Room	30m ²	3.5m	3 rd	16	10	10	9	10
Ivory Room	60m ²	3.5m	3 rd	40	18	14	18	30





Turquoise Ballroom Pre Function Area

S O F I T E L
HOTELS & RESORTS

Sofitel Abu Dhabi Corniche

Corniche East Road – PO Box 44966^[1]_[SEP]

Abu Dhabi, United Arab Emirates

Tel.: +971 2 813 7777 | Email: H7507@sofitel.com

www.sofitelabudhabicorniche.com | www.accorhotels.com