



MAGNIFIQUE
RESORT RETREAT



SOFITEL

HOTELS & RESORTS

THE PALM, DUBAI

TABLE OF CONTENT

- 01. STEP ONTO PALM JUMEIRAH
- 02. POLYNESIAN WELCOME
- 03. ACCOMMODATION
- 04. DINING
- 05. MAGNIFIQUE MEETINGS
- 06. EVENTS
- 07. CAPACITIES AND FLOOR PLAN
- 08. SoSPA AND BEAUTY
- 09. RECREATION AND SoFIT
- 10. AMURA KIDS CLUB
- 11. RESORT MAP

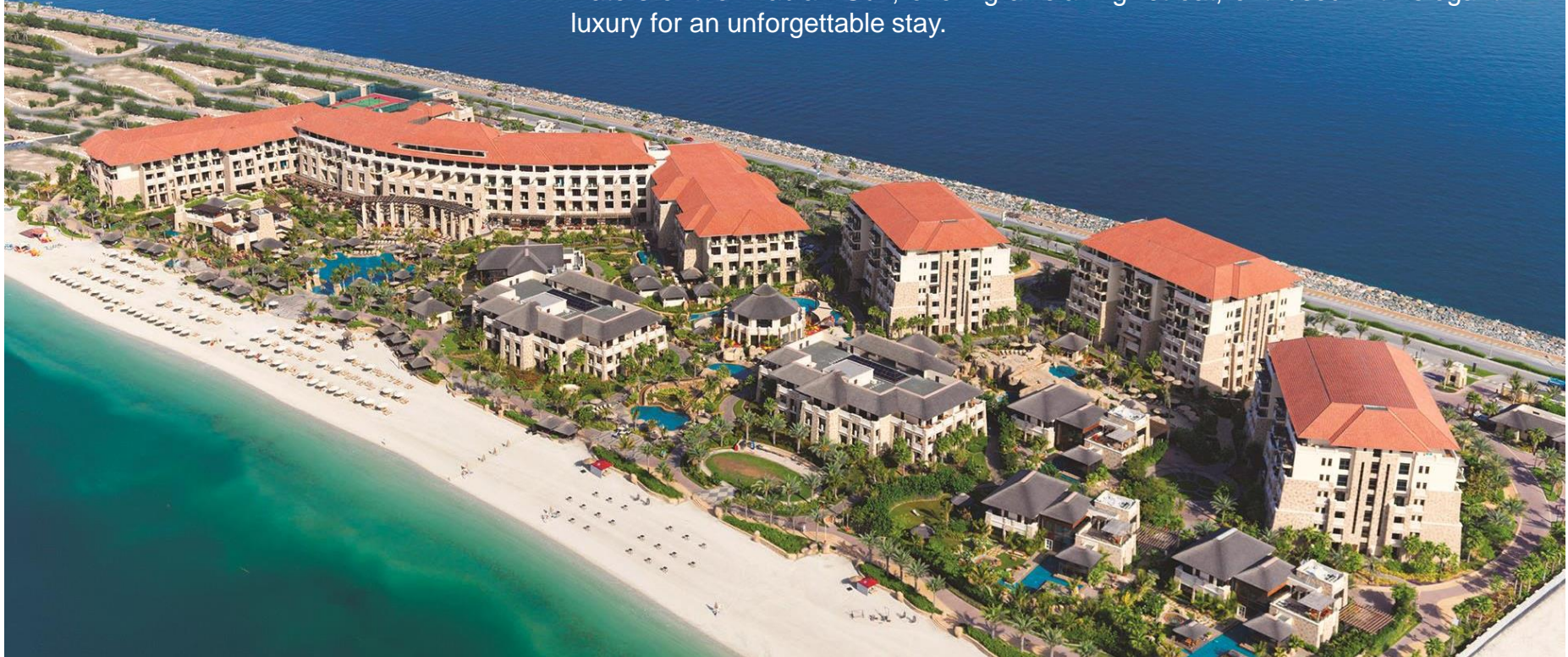


01

STEP ONTO PALM JUMEIRAH



Be captivated by a fresh blend of Polynesian-inspired architecture and Arabian hospitality in the breathtaking setting of Palm Jumeirah, Dubai. A welcoming haven of paradise, this stunning resort overlooks the enticing waters of the Arabian Gulf, offering a relaxing retreat, enthused with elegant luxury for an unforgettable stay.



The pulsating city of Dubai is a unique blend of East and West, the ancient and the modern, along with endless desert and golden beaches.

Sofitel The Palm Dubai is located on the East Crescent of the iconic Palm Jumeirah, the world's most popular man-made island shaped in the form of a palm tree.

A retreat from Dubai's urban cityscape, just 35 minutes' drive from Dubai International Airport and a few minutes from Dubai's main business areas Downtown, Media City, Internet City and The Walk at Jumeirah Beach Residence.



02

POLYNESIAN WELCOME



LIVE THE EXPERIENCE

Located on the prestigious Palm Jumeirah, Sofitel The Palm is a Polynesian themed resort, comprising 546 keys. Alluringly close yet away from the bustling city, the resort sprawls over a long private beach on the East Crescent. The hotel offers a large variety of dining options with 12 restaurants and lounges. Indulge in one of the 4 outstanding private villas or delight in the airy, subtly energising atmosphere of 360 contemporary guest rooms and suites featuring large balconies and gorgeous sea views or Palm views.



TROPICAL ALLURE

360 rooms and suites | 4 private villas | 182 serviced apartments

- Sofitel MyBed™ concept
- 6 restaurants with terrace
- 6 bars and lounges
- 500m private beach
- 6 pools
- Luxury SoSPA
- SoFIT Health Club
- Multi-purpose court
- Complimentary kids club access
- 1 cinema for kids
- 1 ballroom
- 9 meeting rooms
- Complimentary Wi-Fi
- Complimentary shuttle buses





03

ACCOMMODATION



DIVE INTO MY BED

Combining understated luxury with utmost comfort, all guest rooms showcase onyx laden bathroom features, deluxe French amenities along with Sofitel's MyBed™ concept – an all-feather bed and extra light down duvet.

Guests can treat themselves to either rooms, villas or serviced apartments ideal for families with children or for lengthier stays.



ROOM CATEGORIES

237 CLASSIC AND LUXURY ROOMS

- 26 Twin Bedrooms - 44 sqm
- 211 King Bedrooms - 44 sqm

123 LUXURY SUITES

- 50 Junior Suites - 60 sqm
- 22 Prestige Suites - 85 sqm
- 42 Beach Suites - 85 sqm
- 8 Opera Suites - 125 sqm
- The Palm Suite - 450 sqm

182 LUXURY SERVICED APARTMENTS

- 97 One-Bedroom Apartments - 75 sqm
- 82 Two-Bedroom Apartments - 135 sqm
- 3 Three-Bedroom Apartments - 265 sqm

4 PRIVATE VILLAS

- The Beach Villa - 345 sqm
- 3 Lodge Villas - 750 sqm





Beach Suite

THE HEIGHT OF LUXURY

For those who are looking for the ultimate luxury, the Palm Suite offers 4 bedrooms with an expansive terrace showcasing incredible views of both the Palm and the Arabian Gulf from the resorts highest vantage point. Your journey begins with a warm welcome and personalised service with a touch of exclusivity - every detail sets the tone of luxury for the rest of your stay at Sofitel The Palm.

PRIVILEGES

- Club Millésime™ lounge access
- Reception assistance
- Concierge assistance
- A selection of international newspapers and magazines
- 24-hour butler service
- Business center services
- Breakfast from 6:30am to 11:00am in the lounge
- All day tea, coffee, mineral water and light bites
- Evening Millésime™ wine tasting/aperitif
- Complimentary pressing
- Complimentary use of the lounge's meeting room per day
- Limousine Service



THE HEIGHT OF LUXURY





Lodge Villa

04
DINING



THE TASTE OF BON GOUT

Synonymous with the French art de vivre, culinary excellence is one of the cornerstones of the Sofitel experience. Sofitel The Palm Dubai is no exception with 12 restaurants and lounges combining to present a truly international flavour and celebrate food with French touch.

- **Porterhouse** - Succulent Steaks & Grills, classic elegance and star-lit dining
- **Hong Loong** - Chinese cuisine with a contemporary twist
- **Moana** - Delicacies from the sea creatively prepared
- **Manava** - International buffet for breakfast, lunch and dinner
- **Maui Beach** – Pool & Beachfront and Indian cuisine
- **The World Eatery** – Mouthwatering flavours from around the world



THE TASTE OF BON GOUT



The World Eatery



Romantic Cabana



Moana



Porterhouse



Hong Loong



Manava



BARS AND LOUNGES

Varying from lively to laid back, relaxing and socialising is always an option at any hour of the day. Refresh with a glass of cocktail or fresh juice by the pool or beachfront, while connoisseurs taste old and new world wines in rustic or chill-out setting. Enjoy the irresistible scent of fresh coffee, chocolate and French pastries at the lobby lounge. Sample the fragrant flavours of shisha in a soothing ambiance on the outdoor terrace with incredible views of Palm Jumeirah and Marina skyline.

- **Laguna Lounge** - Elegant beachside lounge with chill-out tunes, classy sundowners and sumptuous cuisine
- **Olivier's** - Irresistible scent of fresh coffee, chocolate, French pastries and Chef Olivier's specialties
- **Maui Beach Bar** – Cocktails and fresh fruit juices by the pool or beachfront
- **Porterhouse Bar** - Lively, trendy vibes for pre-dinner aperitif
- **Replay Sports Bar** – Rustic interiors and brick walls with wide screens broadcasting your favourite games live in action
- **Gelati Ice-cream** - Ice cream flavours and refreshments



BARS AND LOUNGES



Maui Terrace



Porterhouse Bar



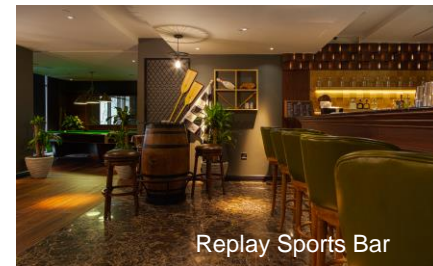
Laguna Lounge



Gelati



Olivier's Lounge



Replay Sports Bar



05

MAGNIFIQUE MEETINGS



BESPOKE CHOICES

With a wide selection of meeting rooms and an elegant ballroom, Sofitel The Palm Dubai is the premier destination for corporate and private entertaining. Our dedicated Magnifique Meetings planners will work meticulously to create the perfect environment for your guests, blending French flair with local style for a high impact event.

- 9 meeting rooms, with 3 boasting natural daylight
- Ballroom accommodating up to 700 guests
- Dedicated entrance to the conference center
- State of the art sound and video systems
- Wireless Internet throughout the resort
- Devoted Magnifique Meetings planners
- Dedicated technical team
- Full service business center
- Direct access to all-day dining restaurant





The Ballroom



Tahiti Meeting Room



Boardroom



Maupiti and Bora Bora Meeting Rooms

06
EVENTS



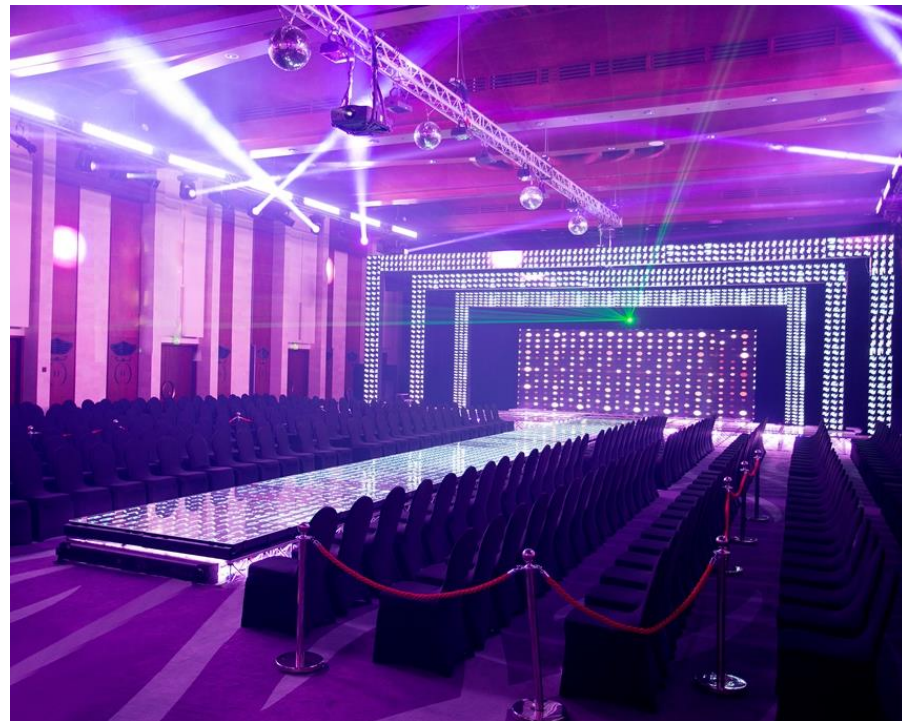
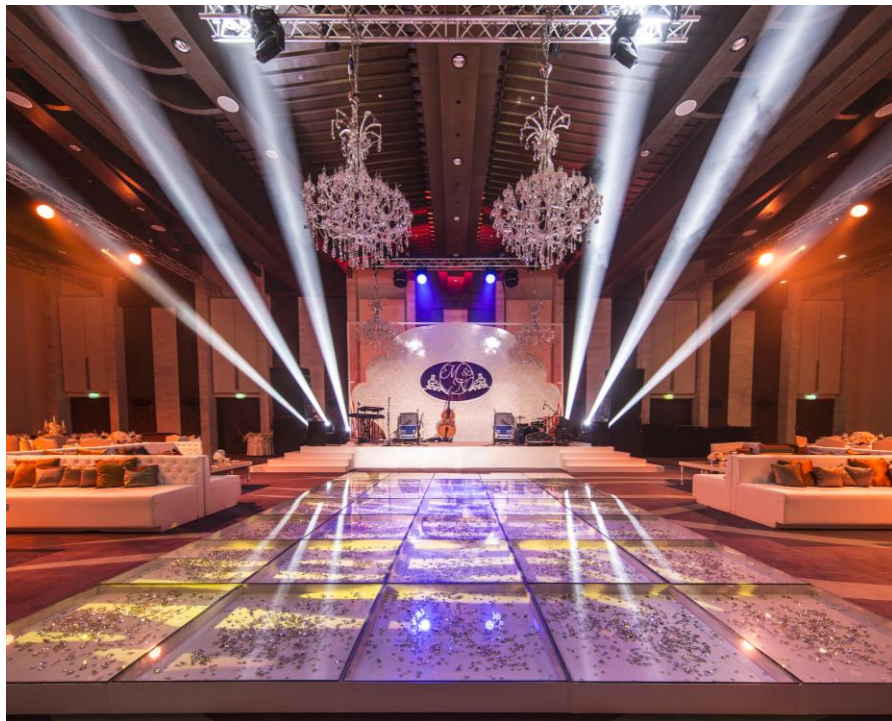
INDOOR

Depending on the scale of your event, our meeting spaces can be configured to suit any seating arrangement and requirement. Be it theatre, banquet or classroom style, the options to transform the space are endless. From corporate cocktail receptions to car launches, fashion shows and private family celebrations, every function is hand-crafted to perfection leaving a lasting impression for all.

- The Library
- Moana Restaurant
- Maui Beach Restaurant
- Porterhouse Steaks & Grills
- Replay Sports Bar
- The Palm Suite
- The Lodge & Beach Villas
- Amura Kids Club
- Meeting Rooms & Ballroom



INDOOR



OUTDOOR

Our magnifique lush gardens offer endless possibilities and the perfect backdrop for outdoor events. The immaculate grounds cater to fairytale tea parties, picnics with an idyllic island feel, romantic cabana dinners by the beach or barbecues on the carpeted lawn. Whatever it is that you require, our dedicated Magnifique Meetings planners will endeavour to make every aspect of your event a success.

- Palm View Garden
- Maui Terrace
- Maui Rooftop
- Moana Terrace
- Porterhouse Terrace
- Lodge Villa Garden
- Palm Suite Terrace
- Beach Cabanas
- Laguna Lounge





WEDDINGS

Begin your lifelong journey in the midst of romance and a luxurious Polynesian setting. With a variety of elegant indoor and outdoor solutions, finding a venue for life's most treasured moment is the easiest of choices. Whether it's an intimate gathering or an extravagant celebration for 700 guests within a stunning garden setting or a traditional indoor event, every detail of your celebration will be arranged beautifully.

- Pre-event functions
- Décor including table settings, theming
- Floral bouquets
- Ceremonial wedding cake
- Bespoke menu creations
- Sound, lights and live entertainment
- Photographic memories
- Bridal beauty treatments
- Limousine service



07

CAPACITIES AND FLOOR PLAN



MEETING VENUE	AREA M²	LENGTH M	WIDTH M	HEIGHT M (HP)	HEIGHT M (LP)	CLASSROOM M	THEATRE	U SHAPE	BOARDROOM	CABARET ROUND OF 6	CABARET ROUND OF 10	COCKTAIL
MOOREA 1	276	12	23	9	6.8	110	215	48	44	102	170	235
MOOREA 2	264.5	11.5	23	9	6.8	110	215	48	44	102	170	235
MOOREA 3	276	12	23	9	6.8	110	215	48	44	102	170	235
MOOREA 1+2+3	816.5	35.5	23	9	6.8	330	900	-	-	306	510	705
PRE-FUNCTION	480	32	15	4.5	3	-	-	-	-	-	-	350
BOARDROOM	110	11	10	3	3	-	-	-	20	-	-	-
TAHITI	48.6	9	5.4	3	3	18	25	16	16	18	20	-
BORA BORA	50.4	9	5.6	3	3	18	25	20	16	18	20	-
MAUPITI	63	9	7	3	3	20	30	22	16	18	30	-
MAUPITI + BORA BORA	113	9	12.6	3	3	38	55	42	26	36	60	70
TAHA'A	45.7	8.62	5.3	3	3	30	50	15	15	18	30	40
THE LIBRARY	118.8	13.2	9	3	3	30	70	32	28	30	50	40
PALM VIEW GARDEN	474.5	32.5	14.6	-	-	-	-	-	-	-	200	300
LAGUNA LOUNGE	312	26	12	-	-	-	-	-	-	-	180	220
MAUI ROOFTOP	172.5	15	11.5	-	-	-	-	-	-	-	70	100
THE ABOVE MENTIONED CAPACITIES ARE ONLY INDICATIVE AND WILL VARY DEPENDING ON FINAL SET-UP AND REQUIREMENT												

CAPACITIES AND FLOOR PLAN



08

SoSPA AND BEAUTY



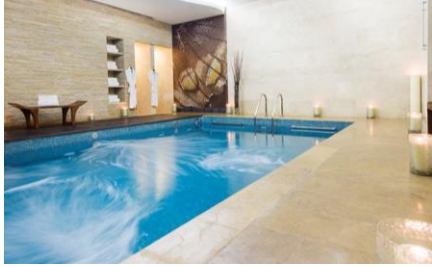
REVITALISE YOUR SENSES

Inspired by the incomparable beauty of the butterfly, SoSPA reinforces relaxation and rejuvenation. Guests can immerse themselves in the 2,500 square meters spa area encompassing 28 treatment rooms, offering revitalising massages, facials and body treatments in an idyllic Polynesian setting. The SoSPA at Sofitel The Palm believes in creating unique, personalised and long lasting spa experiences.

- 24 treatment rooms and 4 outdoor cabanas
- 6 pools including plunge pool, therapeutic pool, outdoor infinity pool
- 2 steam rooms, 2 saunas, 2 Hammam treatment rooms, 2 ice fountains
- Manicure & pedicure
- Hair salon for ladies and gents



REVITALISE YOUR SENSES



09

RECREATION AND SoFIT



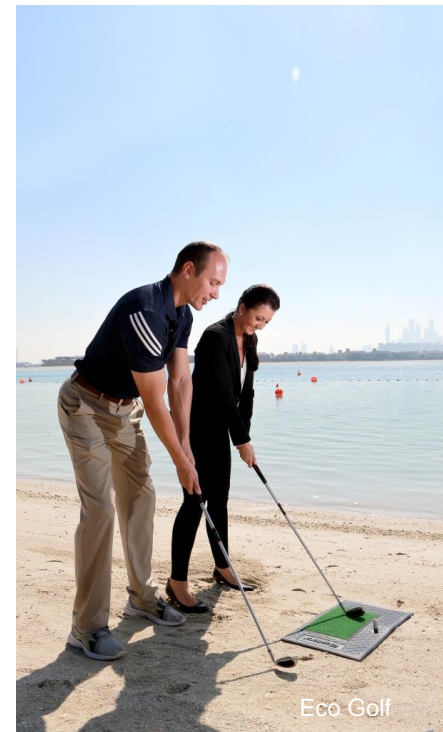
STAY ACTIVE

Open 24 hours a day, SoFIT is a round the clock fitness destination equipped with top of the range Technogym equipment, offering professional instruction from 6am until 10pm, and a variety of innovative activities designed to keep motivation levels high.

- Large fitness health club
- 6 outdoor pools including kids pool with slides
- Multi-purpose court
- Outdoor gym with junior ring
- 1 tennis court
- Shopping arcade
- Private 500m beach
- Watersports
- Aqua-gym (FloatFit) activities
- Team building activities
- Eco Golf



STAY ACTIVE



10

KIDS CLUB



PLAYFUL PARADISE

Let little imaginations take flight at Amura Kids Club, where our experienced team is on hand to entertain children with a whole host of fun and games from 9am until 8pm.

An engaging programme of organised events designed for kids between the ages of four to twelve includes beach and pool activities, arts and crafts, treasure hunt and talent show activities that guarantees to keep the spirits high throughout the day.

Private kid's playground, 2 children's pools, 1 baby pool, in room baby-sitting service, daily kids activities, 1 cinema, 1 ice cream shop, complimentary access



11

RESORT MAP



RESORT MAP



RESTAURANTS, BARS & LOUNGES

- | | |
|--|--|
| 1 GELATI - ICE CREAM | 8 POOL BAR |
| 2 HONG LOONG - CHINESE CUISINE - 2 ND FLOOR | 9 PORTERHOUSE STEAKS & GRILLS - GD FLOOR |
| 3 LAGUNA LOUNGE | 10 PORTERHOUSE BAR - GD FLOOR |
| 4 MANAVA RESTAURANT - GD FLOOR | 11 REPLAY SPORTS BAR - 1 ST FLOOR |
| 5 MAJI BEACH RESTAURANT & BAR | 12 THE WORLD EATERY - GD FLOOR |
| 6 MOANA - SEAFOOD RESTAURANT | |
| 7 OLIVIER'S - GD FLOOR | |

RESORT FACILITIES

- | | |
|--|---|
| 13 AMURA KIDS CLUB | 20 RECREATION / TOWEL CABANA |
| 14 APARTMENTS KORU 1 | 21 SHUTTLE BUS PICK-UP - SOSPA ENTRANCE |
| 15 APARTMENTS KORU 2 | 22 OUTDOOR ACTIVITY ZONE |
| 16 APARTMENTS KORU 3 | 23 BEACH VILLA |
| 17 BEACH SUITES TIARE 1 | 24 THE LIBRARY - 1 ST FLOOR |
| 18 BEACH SUITES TIARE 2 | 25 THE JETTY |
| 19 BALLROOM & MEETING ROOMS - GD FLOOR | 26 WATERSPORTS |

BEAUTY & WELLBEING

- | |
|--|
| 27 MULTI-PURPOSE COURT - 2 ND FLOOR |
| 28 SOFIT HEALTH CLUB - 1 ST FLOOR |
| 29 HAIR & BEAUTY SALON |
| 30 SOSPA - GD FLOOR |

SHOPS

- | |
|---------------------|
| 31 ALL DAY MINIMART |
| 32 SHOPPING ARCADE |

S O F I T E L
HOTELS & RESORTS

Palm Jumeirah - East Crescent Road - P.O. Box: 55 558 - Dubai, United Arab Emirates
For more information, please contact +971 44 55 66 00 or email at H6541@sofitel.com
www.sofitel-dubai-thepalm.com



[/SofitelDubaiPalm](#)